



## Fire and Security Catalogue 2013



Simply reliable



This catalogue sees the introduction of new CCTV and EAP products enhancing our ever expanding product lines. These new products, as always, have been developed to reflect the latest technological advances whilst maintaining sustainable levels of reliability.

## DIGIVIEW

Digiview4i Pro and Digiview8i Pro



The latest release of Digiview branded CCTV systems features advanced technology not seen before. Improved clarity through 700TVL cameras, a silent operation DVR and Wi-Fi network connectivity allows the DigiviewiPro to maintain its market leading status in this popular format. See pages 12 and 13.



4, 8 and 16 Channel Power Video Hubs



PowerCat power video hubs represent a revolution in CCTV cabling. Available in 4, 8 and 16 channel variants they support power to the cameras and video signal from the cameras up to 300m across Cat5e or Cat6 cable. See page 32.

## EZ-WF

Wirefree Video Signal Transmitter



The EZ-WF is designed to provide a digital wire free solution for the transmission of a video signal where a cable run would be expensive or troublesome. The transmitter and receiver are factory "paired" making for a simple installation. See page 33.



NHF Low Energy LED Flood Lights



CE certified to meet EMC emission limitations EN55015:2006 A1:2007 A2:2009

Build quality is key to the NHF range. Ultra reliable drivers and LEDs combined with a superb weather resistant finish and stainless steel fixings make the NHF a perfect choice for a wide range of floodlighting applications. See pages 44 and 45.

## CCTV 4

|   |    |
|---|----|
| Integra Combination Units .....                       | 6  |
| BDeye Combination CCTV / Access Control Systems ..... | 10 |
| Digiview Systems .....                                | 12 |
| TFT Monitors .....                                    | 14 |
| Pro Cameras .....                                     | 16 |
| Cameras .....   | 22 |
| IP Camera .....                                       | 28 |
| Covert Camera .....                                   | 29 |
| Camera Selection Chart .....                          | 29 |
| Recording .....                                       | 30 |
| PowerCat Power Video Hubs .....                       | 32 |
| EZ-WF Wirefree Video Signal Transfer .....            | 33 |
| CCTV Accessories .....                                | 34 |

## EXTERNAL AREA PROTECTION 36

|  |    |
|--|----|
| GuardCam and GuardCam RF .....         | 38 |
| GuardCam LED and GuardCam LED RF ..... | 40 |
| NightHawk LED and NH150LED .....       | 42 |
| NightHawk LED Floodlights .....        | 44 |
| AlertCam .....                         | 46 |

## ACCESS CONTROL 48

|   |    |
|---|----|
| Enterview 5 One Station Kits .....                          | 50 |
| Enterview 5 Handsfree .....                                 | 52 |
| Enterview 5 Additional Monitors .....                       | 53 |
| Enterview 5 Cameras .....                                   | 54 |
| Evoke - Audio Only Door Entry .....                         | 55 |
| Enterview MX Multi Way Video Door Entry Systems .....       | 56 |
| Enterview VX Stainless Steel Video Door Entry Systems ..... | 60 |
| EZ-TAG2 Proximity Door Entry .....                          | 62 |
| EZ-LOCK Pin Code Lock Controller .....                      | 62 |
| Keypad Door Entry Accessories .....                         | 63 |

## FIRE PROTECTION 64

|                                |    |
|--------------------------------|----|
| MAG Fire Alarm Panels .....    | 66 |
| 24v Fire Alarm Detectors ..... | 69 |
| 12v Fire Alarm Detectors ..... | 69 |
| Fire Alarm Sounders .....      | 70 |
| Manual Call Points .....       | 70 |
| Sounder Strobes .....          | 70 |
| Fire Alarm Accessories .....   | 71 |

# CCTV

The ESP CCTV range offers the installer a practical range of security and observation solutions reflecting the best features of established and emerging CCTV technology. The range now includes cameras with up to 700TVL resolution using the amazing Sony Effio-E image processor which allows precision set up in the most demanding situations.







# CCTV COMBINATION UNITS



## Integra 16 - 16 Channel Monitor and DVR System

- 1TB hard drive
- Full network capability
- Auto connect for iPhone/Android remote viewing
- Triplex function
- E-zoom and PIP



## Integra 8 - 8 Channel Monitor and DVR System

- 1TB hard drive
- Full network capability
- Auto connect for iPhone/Android remote viewing
- Triplex function
- E-zoom and PIP



## Integra 4 - 4 Channel Monitor and DVR System

- 500 GB hard drive
- Full network capability
- Auto connect for iPhone/Android remote viewing
- Triplex function
- E-zoom and PIP



Integra offers a compact attractive CCTV solution by combining the latest DVR technology with a high quality TFT display. An intelligent user interface and advanced network and remote viewing capability makes Integra the right choice in even the most demanding applications.

## SYSTEM

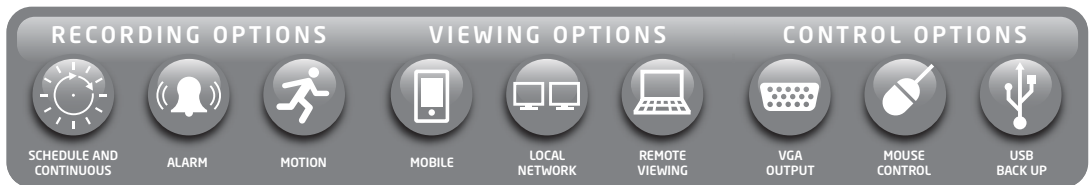
- Triplex operation (record, view live, view remotely at the same time)
- Full remote viewing capability via fixed or dynamic IP address
- Password protection
- iPhone, Android remote viewing via APP
- E-mail alert of trigger events
- Integral PTZ with most popular protocols
- Complete with remote control

## DISPLAY

- TFT monitor
- View in single channel, quad or multi screen mode
- Monitor standby facility
- Separate control of brightness and contrast
- Separate control of colour on each channel

## RECORDING

- Record all cameras in full screen all the time
- Search recordings by event or specified time and date
- Integra 8 and Integra 16 - integral 1TB hard drive
- Integra 4 - integral 500GB hard drive
- Record by schedule / event / on-screen motion or external trigger
- Back up of recorded data to USB stick or external R/W CD
- Up to 8 channels of audio



|                           | INTEGRA 4 / INTEGRA 8   | INTEGRA 16  |
|---------------------------|---|---|
| Video Format              | PAL   | PAL   |
| Video Format              | H.264 Baseline Compression  | H.264 Baseline Compression  |
| Video Input               | Integra 4 - BNC 4 Input / 1 Output<br>Integra 8 - BNC 8 Input / 1 Output                                      | BNC 16 Input / 1 Output   |
| Audio Format              | G.726 8Kx16bit ADPCM Mono   | G.726 8Kx16bit ADPCM Mono   |
| Audio Input               | Integra 4 - RCA 4 Input / 1 Output<br>Integra 8 - RCA 8 Input / 1 Output                                      | RCA 8 Input / 1 Output  |
| Alarm Type                | Motion detection, Sensor Input, Relay Output, Video Loss  | Motion detection, Sensor Input, Relay Output, Video Loss  |
| Sensor In/Out             | 4CH Input / 1CH Output  | 8CH Input / 1CH Output  |
| Display Frame Rate        | Each Channel PAL 25 FPS, NTSC 30 FPS  | Each Channel PAL 25 FPS, NTSC 30 FPS  |
| LCD Monitor               | 15" Colour LCD, 1024x768, 4:3, 450:1, 150nit, CCFL  | 19" Colour LCD, 1024x768, 4:3, 450:1, 150nit, CCFL  |
| Playback Resolution (CH1) | 25fps/(CIF) 25fps/(halfD1), 12fps/D1  | 25fps/(CIF) 12.5fps/(halfD1), 6.25fps/D1  |
| Record Frame Rate         | 100FPS@CIF 100FPS@halfD1 50FPS@D1   | 200FPS@CIF, 100FPS@halfD1, 50FPS@D1   |
| Record method             | Power-on Auto Record, Scheduled Record (Manual Record, Motion Detection, Sensor Trigger) Support Privacy Mask | Power-on Auto Record, Scheduled Record (Manual Record, Motion Detection, Sensor Trigger) Support Privacy Mask |
| HDD Interface             | SATA Interface support 1Tb  | SATA Interface support 1Tb  |
| Network Protocol          | TCP-IP/ DHCP / DNS / PPPoE / E-Mail   | TCP-IP/ DHCP / DNS / PPPoE / E-Mail   |
| Network Function          | IE Browser Live Monitor, Configuration, Download Video Mobile Phone Surveillance                              | IE Browser Live Monitor, Configuration, Download Video Mobile Phone Surveillance                              |
| USB 2.0 Interface         | Mouse / Portable Mobile HDD/ Flash Drive/ DVD Burner/ Firmware Upgrade  | Mouse / Portable Mobile HDD/ Flash Drive/ DVD Burner/ Firmware Upgrade  |
| Playback Method           | Normal Play, Fast Forward, Rewind, Single Step  | Normal Play, Fast Forward, Rewind, Single Step  |
| Network Interface         | RJ45 10M/ 100M Ethernet Auto Detect   | RJ45 10M/ 100M Ethernet Auto Detect   |
| PTZ Protocol              | PELCO-P, PELCO-D  | PELCO-P, PELCO-D  |
| Video Backup              | AVI   | AVI   |
| Power Adapter             | DC 12V Adaptor  | DC 12V Adaptor  |
| Power Consumption         | 10~15W  | 10~15W  |
| Operating Temperature     | 0~+40°C   | 0~+40°C   |
| Operating Humidity        | 10%~90% RH  | 10%~90% RH  |
| Dimensions                | 360 x 360 x 160mm (WHD) inc. stand/base   | 462 x 405 x 190mm (WHD) inc. stand/base   |

# CCTV COMBINATION UNITS



## INTEGRA 4K1

Integra 4 - 4 channel monitor and DVR with 500GB HD plus 4 x IRCAM40 external cameras, 4 x CAB-20 cables and 1 x CPS4 boxed power supply.

- 500 GB hard drive
- Full network capability
- Auto connect for iPhone/Android remote viewing
- Triplex function
- E-zoom and PIP



## INTEGRA 4K2

Integra 4 - 4 channel monitor and DVR with 500GB HD plus 4 x DOMEVF internal dome cameras, 4 x CAB-20 cables and 1 x CPS4 boxed power supply.

- 500 GB hard drive
- Full network capability
- Auto connect for iPhone/Android remote viewing
- Triplex function
- E-zoom and PIP







## INTEGRA 8K1

Integra 8 - 8 channel monitor and DVR with 1Tb HD plus 8 x IRCAM40 external cameras, 8 x CAB-20 cables and 1 x CPS9 boxed power supply.

- 1Tb hard drive
- Full network capability
- Auto connect for iPhone/Android remote viewing
- Triplex function
- E-zoom and PIP



## INTEGRA 8K2

Integra 8 - 8 channel monitor and DVR with 1Tb HD plus 8 x DOMEVF internal dome cameras, 8 x CAB-20 cables and 1 x CPS9 boxed power supply.

- 1Tb hard drive
- Full network capability
- Auto connect for iPhone/Android remote viewing
- Triplex function
- E-zoom and PIP



# CCTV COMBINATION UNITS

## BDeye - Combination CCTV Access Control System

The BDeye is a combined CCTV and video door entry solution in one small high design package ideally suited for the executive home or modern office. At the centre of the system is an 8" TFT monitor with a built in full feature DVR. The monitor feeds power to, and accepts video signals from, up to 4 internal or external CCTV cameras.

- 8" clear TFT monitor
- Built in slimline DVR
- 500GB hard drive
- LAN connection for remote viewing
- Touch panel controls
- High gloss white or black finish
- Desk or wall mounted
- Plug and play DIN cables
- 4 channel quad display
- Remote viewing via App for iPhone and Android
- USB mouse control
- USB memory stick for data backup
- Up to two optional video entry call points
- Day/night camera with IR illumination
- Simple set up and operation



### BDeye CAM



Additional camera for BDeye  
c/w 15m Cable

### BDeye VDE



Video door entry call point for  
BDeye c/w 15m cable

### BDeye CCab / BDeye VCab



BDeye CCab -  
Additional 15m cable for BDeye Cam  
BDeye VCab -  
Additional 15m cable for BDeye VDE

## Design Features



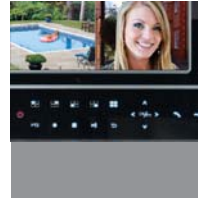
8" clear TFT monitor



500GB hard drive



LAN connection for remote viewing



Touch panel controls



High gloss white or black finish



Desk or wall mounted



Day/night camera with IR illumination



Up to two video entry call points



Plug and play DIN cables



Remote viewing via App for iPhone and Android

### SYSTEM

|                     |   |
|---------------------|---|
| Control system      | LINUX   |
| System resources    | Triplex , supports simultaneous recording, video playback and network & mobile operations |
| Operation interface | User-friendly menu interface  |
| User interface      | Panel touch button and remote control   |
| Video protocol      | H.264   |
| Audio protocol      | G.711A  |

### VIDEO

|                    |   |
|--------------------|---|
| Video input        | 4 x camera plus 2 x video door entry                  |
| Video output       | One way   |
| Preview resolution | D1  |
| Video recording    | D1, HD1, CIF, QCIF (selectable options)               |
| Image division     | Single or quad screen display                         |
| Recording          | Scheduled, Motion detection or Visitor call recording |
| On screen display  | Channel, Time, Recording and Alarm information        |

### AUDIO

|              |                   |
|--------------|-------------------|
| Audio input  | Two-way           |
| Audio output | One way           |
| VDE audio    | Full duplex audio |

### HARD DISK

|           |  |
|-----------|--|
| Hard disk | 500GB built-in one SATA interface, 2.5 inch hard MAX 1Tb |
|-----------|--|

### VIDEO RECORDING AND PLAYBACK

|                        |  |
|------------------------|--|
| Video recording mode   | Video recording by manual, schedule, motion detection, sensor and visitor call |
| Multi-channel playback | Four channel quad or single channel  |

### VIDEO DOOR PHONE FUNCTIONS

|                 |                                     |
|-----------------|-------------------------------------|
| Calling         | Two channel                         |
| Video recording | Visitor calling and video recording |
| Unlocking       | Electric lock release function      |

### INTERFACE

|                      |                                      |
|----------------------|--------------------------------------|
| Networking interface | One RJ45 10M/100M network interface  |
| Camera interface     | Four 6-core mini din video (Max 80M) |
| VDE interface        | Two 4-core mini din video (Max 80M)  |
| Alarm interface      | One 5-core                           |
| AV output interface  | One AV 3.5                           |



### POWER SUPPLY

|                  |  |
|------------------|--|
| Video call point | Four way camera powered by integral central power supply         |
| Outdoor station  | Two way outdoor station powered by integral central power supply |

### SPECIFICATIONS

|                      |                                  |
|----------------------|----------------------------------|
| Power supply         | DC +12V 4.5A                     |
| Screen               | 8" TFT-LCD                       |
| Resolution           | 800x600                          |
| Temperature Range    | -10°C - +70°C                    |
| Dimensions           | 250 x 210 x 35mm                 |
| Installation methods | Desktop or wall mounting options |

### CAMERA

|                          |                              |
|--------------------------|------------------------------|
| Sensor                   | 1/3" LG CCD                  |
| Effective Pixel          | 500 (H) x 582 (V)            |
| Resolution Ratio         | 720x576                      |
| Frame                    | PAL: 1-25 fps                |
| Electronic shutter speed | 1/60 - 1/100,000 S (NTSC)    |
| Horizontal resolution    | 420TVL                       |
| Lens                     | 3.6MM                        |
| IR viewing distance      | 10m                          |
| Power supply             | DC 12V                       |
| Operation Current        | 220mA                        |
| Operation Temperature    | Indoor/outdoor, -10°C - 60°C |
| Weatherproofing          | IP55 rated                   |

# CCTV DIGIVIEW SYSTEMS

**NEW**

## Digiview4i Pro - 4 Channel Networkable CCTV Systems



The latest release of Digiview branded CCTV systems features advanced technology not seen before. Improved clarity through 700TVL cameras, a silent operation DVR and Wi-Fi network connectivity allows the Digiview4i Pro to maintain its market leading status in this popular format.

- 4 x 700TVL Day/Night cameras with 15m infra red illumination
- Silent fanless operation
- Integral hard drive (Digiview4iPro 500GB - Digiview8iPro 1TB)
- Remote monitoring via wired or Wi-Fi network (optional adaptor req.)
- Mobile monitoring with MEyePro Android or iPhone APP
- Triplex operation - Playback / Record / Remote view simultaneously
- VGA output (lead supplied)
- Four recording options - Continuous / Scheduled / Motion / Sensor
- USB back up of recordings for easy evidence transfer
- Mouse driven comprehensive user interface
- Quad / Sequence / Single channel viewing
- Individual channel set up (recording and display)

**NEW**

## Digiview8i Pro - 8 Channel Networkable CCTV Systems



Digiview8i Pro offers the comprehensive capabilities of the Digiview4i Pro but with the opportunity to expand the system with up to four extra cameras.





### Contents of Digiview4i Pro

- 1 x 4 channel DVR
- 4 x 700TVL cameras
- 4 x 20m camera cable
- 1 x 5 way power supply
- 1 x 2GB USB stick
- 1 x 500GB hard drive (pre-installed)



### Contents of Digiview8i Pro

- 1 x 8 channel DVR
- 4 x 700TVL cameras
- 4 x 20m camera cable
- 1 x 5 way power supply
- 1 x 4 way power supply
- 1 x 2GB USB stick
- 1 x 1TB hard drive (pre-installed)

### Digiview4i Pro and Digiview8i Pro

|                               |   |
|-------------------------------|---|
| Camera Input                  | Digiview4i Pro - 4 Channel<br>Digiview8i Pro - 8 Channel  |
| Video Input                   | Digiview4i Pro - 4 x BNC<br>Digiview8i Pro - 8 x BNC  |
| Video Output                  | 1VGA (1280x1024) +2 x BNC   |
| Audio Input                   | 1 x RCA   |
| Audio Output                  | 1 x RCA   |
| Operating System              | Embedded Linux OS   |
| Internal HDD                  | Supports 1 SATA Device (HDDx1), upto 2TB  |
| Serial Interface              | RS-485  |
| USB                           | 2 x USB connectors  |
| Dimension                     | 250mm x 225mm x 45mm ( L x W x H )  |
| Weight (w/o HDD/DVD±RW)       | 1.0 Kg  |
| Adaptor Input                 | 100~240V, Output 12V 5A   |
| Power Source                  | 60 W  |
| Display Speed                 | Digiview4i Pro - 100 fps (PAL)<br>Digiview8i Pro - 200 fps (PAL)  |
| Display Resolution (Pixel)    | 704 X 576 (PAL)   |
| Recording Compression         | H.264 main profile  |
| Network Interface             | 10/100 Ethernet   |
| Network Protocol              | TCP/IP, PPPoE, DDNS, UPNP, FTP and NTP  |
| Network Application           | Windows XP/VISTA/7/8 (PC Client system)   |
| Network 3G / GPRS             | Windows mobile; iPhone; Blackberry; Symbian;<br>Android system and 3G   |
| Motion Detection              | Detected Frames: Unlimited / Channel<br>Sensitivity: 6 levels for each channel<br>Area: 192 (16x12) surveyed area,<br>Programmable individually     |
| DVR/OSD Control GUI           | 16-bit True Color   |
| DVR/OSD Control Languages     | English, French, Portugal, Russia, Italian, Spanish, Thai,<br>Greek, Japanese, German, Turkish, Polski, Finnish and<br>Farsi.Chinese (28 Languages) |
| DVR/OSD Camera Title          | English/number  |
| DVR/OSD Mouse                 | YES   |
| DVR/OSD Remote Controller     | IR Remote Control   |
| DVR/OSD System Upgrade        | via USB / Network   |
| DVR/OSD Pan/Tilt/Zoom Control | Control From RS485 Interface  |

### Cameras

|                         |                                   |
|-------------------------|-----------------------------------|
| Camera Sensor           | 1/3.3" Color CMOS                 |
| Resolution              | 700 TVL                           |
| Lens                    | 3.6mm Fixed                       |
| Effective Pixels        | 720 x 576                         |
| LED Quantity            | 24pcs                             |
| IR Range                | Upto 15m                          |
| Minimum Illumination    | 0.01 Lux / F1.2, 0 Lux (IR on)    |
| Gamma                   | 0.45 (AGC off)                    |
| Scanning System         | 2:1 Interlace                     |
| Sync System             | Interior                          |
| Back Light Compensation | ON                                |
| White Balance           | Auto                              |
| Gain Control            | Auto                              |
| ICR                     | Removable IR Cut Filter           |
| Video Output            | 1 Vp-p 75 Ohm,<br>F-BNC Connector |
| Input Voltage           | DC12V +/- 10%                     |
| Input Current           | 90mA (IR off) / 270mA (IR on)     |
| Operating Temperature   | -10°C to +45°C                    |
| Operating Humidity      | 80% RH                            |

# CCTV TFT MONITORS

## TFT 19 - 19" LCD TFT CCTV Monitor



- Full composite video input via VGA or BNC
- Sleek black design
- Anti-Glare technology
- Loop out facility

|                 |   |
|-----------------|---|
| Panel Type      | 19"(5:4) LCD                            |
| Video Signal    | Video Input x 1 (BNC); S-video x 1      |
| Audio Signal    | RCA Jack x 2 (L/R)                      |
| VGA Input       | 15 pin D-Sub (Analog RGB) for VGA Input |
| Resolution      | SXGA (1280x1024)                        |
| Contrast        | 500:1 Typical                           |
| Brightness      | 350 cd/m <sup>2</sup> Typical           |
| Viewing Angle   | H: 160 degrees - V: 150 degrees         |
| Screen Control  | OSD Multi-language Menu                 |
| Response Time   | 6ms Typical                             |
| Power Supply    | DC 12V Adaptor Supplied, AC100V~240V    |
| Dimensions (mm) | 360H x 425L x 65D                       |
| Weight (kg)     | 4.2kg                                   |

## TFT 17 - 17" LCD TFT CCTV Monitor



- Full composite video input via VGA or BNC
- Sleek black design
- Anti-Glare technology
- Loop out facility

|                 |   |
|-----------------|---|
| Panel Type      | 17"(5:4) LCD                            |
| Video Signal    | Video Input x 1 (BNC); S-video x 1      |
| Audio Signal    | RCA Jack x 2 (L/R)                      |
| VGA Input       | 15 pin D-Sub (Analog RGB) for VGA Input |
| Resolution      | SXGA (1280x1024)                        |
| Contrast        | 450:1 Typical                           |
| Brightness      | 350 cd/m <sup>2</sup> Typical           |
| Viewing Angle   | H: 160 degrees - V: 150 degrees         |
| Screen Control  | OSD Multi-language Menu                 |
| Response Time   | 6ms Typical                             |
| Power Supply    | DC 12V Adaptor Supplied, AC100V~240V    |
| Dimensions (mm) | 320H x 380L x 55D                       |
| Weight (kg)     | 3.4kg                                   |

# CCTV TFT MONITORS

## TFT 15 - 15" LCD TFT CCTV Monitor



- Full composite video input via VGA or BNC
- Sleek black design
- Anti-Glare technology
- Loop out facility

|                 |   |
|-----------------|---|
| Panel Type      | 15"(4:3) LCD                            |
| Video Signal    | Video Input x 1 (BNC); S-video x 1      |
| Audio Signal    | RCA Jack x 2 (L/R)                      |
| VGA Input       | 15 pin D-Sub (Analog RGB) for VGA Input |
| Resolution      | XGA (1024x768)                          |
| Contrast        | 350:1 Typical                           |
| Brightness      | 300 cd/m2 Typical                       |
| Viewing Angle   | H: 160 degrees - V: 150 degrees         |
| Screen Control  | OSD Multi-language Menu                 |
| Response Time   | 8ms Typical                             |
| Power Supply    | DC 12V Adaptor Supplied, AC100V~240V    |
| Dimensions (mm) | 280H x 350L x 55D                       |
| Weight (kg)     | 2.6kg                                   |

## TFT 10 - 10" LCD TFT CCTV Monitor



- Full composite video input via VGA or BNC
- Sleek black design
- Anti-Glare technology

|                 |   |
|-----------------|---|
| Panel Type      | 10"(4:3) LCD                            |
| Video Signal    | Video Input x 1 (BNC); S-video x 1      |
| Audio Signal    | RCA Jack x 2 (L/R)                      |
| VGA Input       | 15 pin D-Sub (Analog RGB) for VGA Input |
| Resolution      | XGA (1024x768)                          |
| Contrast        | 300:1 Typical                           |
| Brightness      | 300 cd/m2 Typical                       |
| Viewing Angle   | H: 160 degrees - V: 150 degrees         |
| Screen Control  | OSD Multi-language Menu                 |
| Response Time   | 8ms Typical                             |
| Power Supply    | DC 12V Adaptor Supplied, A C100V~240V   |
| Dimensions (mm) | 240H x 285L x 45D                       |
| Weight (kg)     | 1.2kg                                   |



## 700TVL PRO CAMERAS - SEE THE DIFFERENCE



In addition to the greatly enhanced clarity and detail afforded by a 700TVL image sensor the Pro camera range also features Sony Effio-E signal processing to further enhance and manage picture quality.

### **AUTOMATIC GAIN CONTROL (AGC)**

Enhancement of the video output to provide the best image in low light conditions.

### **WIDE DYNAMIC RANGE (D-WDR)**

Provides an even image balance where varying light conditions exist within the scene viewed.

### **BACK LIGHT COMPENSATION (BLC)**

Enhances illumination of the foreground of a scene where strong backlight (eg. from an external door or window) is present.

### **DIGITAL NOISE REDUCTION (2DNR)**

Fixes digital noise on the image caused by low light conditions or strong colours.

### **HIGH LIGHT CONTROL (HLC)**

Automatic suppression and masking of very high light sources such as car head lights that would normally obscure number plates at night.

### **PRIVACY MASKING**

Allows areas of the image to be partially or fully masked for legal or privacy reasons.



Sony Effio-E functions are all controlled via a convenient in-line menu selector and on-screen display.

Use of a local test monitor is recommended during installation (see page 34)







## IRCAM200 Pro External Day/Night Camera

- 700 TVL
- 6mm fixed lens
- Sony Effio-E image sensor
- OSD control button
- Up to 15m Infra Red illumination
- 12v DC 400mA (IR-on)
- Weatherproof IP66 rating



**SONY**  
**Effio**<sup>TM</sup>  
Ex-View HAD CCD II -960H

- DSP Sony Effio-E enhanced
- Resolution 700TVL
- Adaptive Tone Reproduction
- 2D Noise Reduction
- Exposure Control
- High Light Compensation



|                      |                               |
|----------------------|-------------------------------|
| TVL                  | 700TVL                        |
| Image sensor         | Sony Ex-View HAD CCD II -960H |
| DSP                  | Sony Effio-E enhanced         |
| Shutter speed        | 1/50-1/120,000S               |
| Lens type            | Fixed CS Mount Lens (f=6mm)   |
| Minimum illumination | 0.001 Lux/F1.2; 0 Lux (IR ON) |
| S/N ratio            | More Than 52dB (AGC OFF)      |
| White Balance        | ATW                           |
| Operating temp       | -20°C To +50°C                |
| Dimensions           | 150mm(L) x 90mm(W) x 83mm(H)  |
| Weight Approx        | 800g                          |
| Power consumption    | IR on 400mA                   |
| Power consumption    | IR off 120mA                  |
| IP Rating            | IP66                          |



## IRCAM600 Pro External Day/Night Camera

- 700 TVL
- 2.8-12mm varifocal lens
- Sony Effio-E image sensor
- OSD control button
- Up to 30m Infra Red illumination
- 12v DC 400mA (IR-on)
- Weatherproof IP66 rating



**SONY**  
**Effio**<sup>TM</sup>  
Ex-View HAD CCD II -960H

- DSP Sony Effio-E enhanced
- Resolution 700TVL
- Adaptive Tone Reproduction
- 2D Noise Reduction
- Exposure Control
- High Light Compensation



|                      |                                 |
|----------------------|---------------------------------|
| TVL                  | 700TVL                          |
| Image sensor         | Sony Ex-View HAD CCD II -960H   |
| DSP                  | Sony Effio-E enhanced           |
| Shutter speed        | 1/50-1/120,000S                 |
| Lens type            | 2.8-12mm Manual Vari-Focal Lens |
| Minimum illumination | 0.001 Lux/F1.2; 0 Lux (IR ON)   |
| S/N ratio            | More Than 52dB (AGC OFF)        |
| White Balance        | ATW                             |
| Operating temp       | -20°C To +50°C                  |
| Dimensions           | 150mm(L) x 90mm(W) x 83mm(H)    |
| Weight Approx        | 1000g                           |
| Power consumption    | IR on 400mA                     |
| Power consumption    | IR off 120mA                    |
| IP Rating            | IP66                            |

## IRCAM700 Pro External Day/Night Camera

- 700 TVL
- 9-22mm varifocal lens
- Sony Effio-E image sensor
- OSD control button
- Up to 50m Infra Red illumination
- 12v DC 400mA (IR-on)
- Weatherproof IP66 rating



|                      |                               |
|----------------------|-------------------------------|
| TVL                  | 700TVL                        |
| Image sensor         | Sony Ex-View HAD CCD II -960H |
| DSP                  | Sony Effio-E enhanced         |
| Shutter speed        | 1/50-1/120,000S               |
| Lens type            | 9-22mm Manual Vari-Focal Lens |
| Minimum illumination | 0.001 Lux/F1.2; 0 Lux (IR ON) |
| S/N ratio            | More Than 52dB (AGC OFF)      |
| White Balance        | ATW                           |
| Operating temp       | -20°C To +50°C                |
| Dimensions           | 155(L) x 100mm(W) x 92(H)mm   |
| Weight Approx        | 1000g                         |
| Power consumption    | IR on 400mA                   |
| Power consumption    | IR off 120mA                  |
| IP Rating            | IP66                          |



**SONY**  
**Effio**<sup>TM</sup>  
Ex-View HAD CCD II -960H

- DSP Sony Effio-E enhanced
- Resolution 700TVL
- Adaptive Tone Reproduction
- 2D Noise Reduction
- Exposure Control
- High Light Compensation



## IRCAM900 Pro External Day/Night Camera

- 700 TVL
- 5-50mm varifocal lens
- Sony Effio-E image sensor
- OSD control button
- Up to 50m Infra Red illumination
- 12v DC 400mA (IR-on)
- Weatherproof IP66 rating



|                      |                               |
|----------------------|-------------------------------|
| TVL                  | 700TVL                        |
| Image sensor         | Sony Ex-View HAD CCD II -960H |
| DSP                  | Sony Effio-E enhanced         |
| Shutter speed        | 1/50-1/120,000S               |
| Lens type            | 5-50mm Manual Vari-Focal Lens |
| Minimum illumination | 0.001 Lux/F1.2; 0 Lux (IR ON) |
| S/N ratio            | More Than 52dB (AGC OFF)      |
| White Balance        | ATW                           |
| Operating temp       | -20°C To +50°C                |
| Dimensions           | 185mm(L) x 105mm(H) x 95mm(H) |
| Weight Approx        | 800g                          |
| Power consumption    | IR on 400mA                   |
| Power consumption    | IR off 120mA                  |
| IP Rating            | IP66                          |



**SONY**  
**Effio**<sup>TM</sup>  
Ex-View HAD CCD II -960H

- DSP Sony Effio-E enhanced
- Resolution 700TVL
- Adaptive Tone Reproduction
- 2D Noise Reduction
- Exposure Control
- High Light Compensation



## MINIDOME Pro Internal/External Dome Camera



- 700 TVL
- 2.8mm fixed lens
- Sony Effio-E image sensor
- OSD control button
- 12v DC 120mA
- Weatherproof IP65 rating



**SONY**  
**Effio**<sup>TM</sup>  
Ex-View HAD CCD II -960H

- DSP Sony Effio-E enhanced
- Resolution 700TVL
- Adaptive Tone Reproduction
- 2D Noise Reduction
- Exposure Control
- High Light Compensation

|                      |                               |
|----------------------|-------------------------------|
| TVL                  | 700TVL                        |
| Image sensor         | Sony Ex-View HAD CCD II -960H |
| DSP                  | Sony Effio-E enhanced         |
| Shutter speed        | 1/50-1/120,000S               |
| Lens type            | Fixed Lens (f=2.8mm)          |
| Minimum illumination | 0.001 Lux/F1.2                |
| S/N ratio            | More Than 52dB (AGC OFF)      |
| White Balance        | ATW                           |
| Operating temp       | -20°C To +50°C                |
| Dimensions           | 94mm(c) x 68mm(H)             |
| Weight Approx        | 400g                          |
| Power consumption    | 120mA                         |

## IRDOME Pro Internal Day/Night Camera



- 700 TVL
- 4mm fixed lens
- Sony Effio-E image sensor
- OSD control button
- 12v DC 120mA



**SONY**  
**Effio**<sup>TM</sup>  
Ex-View HAD CCD II -960H

- DSP Sony Effio-E enhanced
- Resolution 700TVL
- Adaptive Tone Reproduction
- 2D Noise Reduction
- Exposure Control
- High Light Compensation

|                      |                               |
|----------------------|-------------------------------|
| TVL                  | 700TVL                        |
| Image sensor         | Sony Ex-View HAD CCD II -960H |
| DSP                  | Sony Effio-E enhanced         |
| Shutter speed        | 1/50-1/120,000S               |
| Lens type            | Built-in 4mm Fixed Lens       |
| Minimum Illumination | 0.001Lux / F1.2,0Lux (IR ON)  |
| S/N Ratio            | More Than 52dB (AGC OFF)      |
| White Balance        | ATW                           |
| Operating temp       | -10°C To +45°C                |
| Dimensions           | 95mm(c) x 85mm(H)             |
| Weight Approx        | 200g                          |
| Power Requirement    | DC12V±10% & 400mA             |

## DOMEV Pro Internal/External Dome Camera



- 700 TVL
- 2.8-12mm varifocal lens
- Sony Effio-E image sensor
- OSD control button
- 12v DC 120mA



**SONY**  
**Effio**<sup>TM</sup>  
Ex-View HAD CCD II -960H

- DSP Sony Effio-E enhanced
- Resolution 700TVL
- Adaptive Tone Reproduction
- 2D Noise Reduction
- Exposure Control
- High Light Compensation

|                      |                                 |
|----------------------|---------------------------------|
| TVL                  | 700TVL                          |
| Image sensor         | Sony Ex-View HAD CCD II -960H   |
| DSP                  | Sony Effio-E enhanced           |
| Shutter speed        | 1/50-1/120,000S                 |
| Lens type            | 2.8-12mm Manual Vari-Focal Lens |
| Minimum illumination | 0.001 Lux/F1.2                  |
| S/N ratio            | More Than 52dB (AGC OFF)        |
| White Balance        | ATW                             |
| Operating temp       | -20°C To +50°C                  |
| Dimensions           | 105mm(ç) x 70mm(H)              |
| Weight Approx        | 500g                            |
| Power consumption    | 120mA                           |
| IP Rating            | IP65                            |

## IRDOMEXT Pro External Dome Camera



- 700 TVL
- 3.6mm fixed lens
- Sony Effio-E image sensor
- OSD control button
- Up to 8m Infra Red illumination
- 12v DC 400mA (IR-on)



**SONY**  
**Effio**<sup>TM</sup>  
Ex-View HAD CCD II -960H

- DSP Sony Effio-E enhanced
- Resolution 700TVL
- Adaptive Tone Reproduction
- 2D Noise Reduction
- Exposure Control
- High Light Compensation



|                      |                                    |
|----------------------|------------------------------------|
| TVL                  | 700TVL                             |
| Image sensor         | Sony Ex-View HAD CCD II -960H      |
| DSP                  | Sony Effio-E enhanced              |
| Shutter speed        | 1/50-1/120,000S                    |
| Lens type            | Fixed Lens (f=3.6mm)               |
| Minimum illumination | 0.001 Lux/F1.2; 0 Lux (IR ON)      |
| S/N ratio            | More Than 52dB (AGC OFF)           |
| White Balance        | ATW                                |
| Operating temp       | -20°C To +50°C                     |
| Dimensions           | L160 x W124 x H110 (incl. bracket) |
| Weight Approx        | 500g                               |
| Power consumption    | IR on 400mA                        |
| Power consumption    | IR off 120mA                       |
| IP Rating            | IP65                               |



## IRDOMEXTVF Pro External Dome Camera



- 700 TVL
- 2.8-12mm varifocal lens
- Sony Effio-E image sensor
- OSD control button
- Up to 30M Infra Red illumination
- 12v DC 400mA (IR-on)
- Weatherproof IP66 rating



|                      |                                    |
|----------------------|------------------------------------|
| TVL                  | 700TVL                             |
| Image sensor         | Sony Ex-View HAD CCD II -960H      |
| DSP                  | Sony Effio-E enhanced              |
| Shutter speed        | 1/50-1/120,000S                    |
| Lens type            | 2.8-12mm Manual Vari-Focal Lens    |
| Minimum illumination | 0.001 Lux/F1.2; 0Lux (IR ON)       |
| S/N ratio            | More Than 52dB (AGC OFF)           |
| White Balance        | ATW                                |
| Operating temp       | -20°C To +50°C                     |
| Dimensions           | L178 x W138 x H129 (incl. bracket) |
| Weight Approx        | 800g                               |
| Power consumption    | IR on 400mA                        |
| Power consumption    | IR off 120mA                       |
| IP Rating            | IP65                               |

**SONY**  
**Effio**<sup>TM</sup>  
Ex-View HAD CCD II -960H

- DSP Sony Effio-E enhanced
- Resolution 700TVL
- Adaptive Tone Reproduction
- 2D Noise Reduction
- Exposure Control
- High Light Compensation



## IRDOME3XVF Pro External Dome Camera



- 700 TVL
- 2.8-12mm varifocal lens
- Sony Effio-E image sensor
- OSD control button
- Up to 10m Infra Red illumination
- 12v DC 400mA (IR-on)
- 3 axis mounting
- Vandal resistant



|                      |                                 |
|----------------------|---------------------------------|
| TVL                  | 700TVL                          |
| Image sensor         | Sony Ex-View HAD CCD II -960H   |
| DSP                  | Sony Effio-E enhanced           |
| Shutter speed        | 1/50-1/120,000S                 |
| Lens type            | 2.8-12mm Manual Vari-Focal Lens |
| Minimum illumination | 0.001 Lux/F1.2; 0Lux (IR ON)    |
| S/N ratio            | More Than 52dB (AGC OFF)        |
| White Balance        | ATW                             |
| Operating temp       | -20°C To +50°C                  |
| Dimensions           | 120mm(ø) x 95mm(H)              |
| Weight Approx        | 800g                            |
| Power consumption    | IR on 400mA                     |
| Power consumption    | IR off 120mA                    |
| IP Rating            | IP65                            |

**SONY**  
**Effio**<sup>TM</sup>  
Ex-View HAD CCD II -960H

- DSP Sony Effio-E enhanced
- Resolution 700TVL
- Adaptive Tone Reproduction
- 2D Noise Reduction
- Exposure Control
- High Light Compensation

## IRCAM40 External Day/Night Camera



- 420 TVL
- 3.6mm fixed lens
- Up to 15m Infra Red illumination
- 12v DC 270mA (IR-on)
- Weatherproof IP65 rating

|                      |  |
|----------------------|--|
| CCD Sensor           | 1/4" SONY Super-HAD                          |
| Resolution           | 420 TVL                                      |
| Lens                 | 3.6mm Fixed                                  |
| Effective Pixels     | NTSC: 510(H) x 492(V) / PAL: 500(H) x 582(V) |
| LED Quantity         | 18pcs  |
| IR Range             | Up to 15m                                    |
| Minimum Illumination | 0 Lux / F2.0. IR ON: 0 Lux                   |
| Gamma                | 0.45 (AGC off)                               |
| Scanning System      | 2:1 Interlace                                |
| Sync System          | Interior                                     |
| Back Light Comp.     | ON   |
| White Balance        | Auto   |
| Gain Control         | Auto   |
| Flicker Correction   | ON   |
| Video Output         | 1 Vp-p 75 Ohm, F-Plug Connector              |
| Input Voltage        | DC12V +/- 10%                                |
| Input Current        | 90mA (IR off) / 270mA (IR on)                |
| Operating Temp.      | -10°C to 55°C                                |
| Operating Humidity   | 80% RH                                       |
| IP Rating            | IP65   |

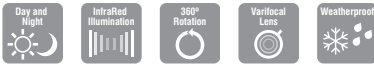
## IRCAM200 External Day/Night Camera



- 420 TVL
- 6mm fixed lens
- Up to 15m Infra Red illumination
- 12v DC 350mA (IR-on)
- Weatherproof IP66 rating

|                          |                                  |
|--------------------------|----------------------------------|
| Signal System            | PAL                              |
| Effective Pixels         | 500(H) x 582(V)                  |
| Image sensor             | 1/3" SONY Super HAD CCD          |
| Sensing Area             | 4.9mm x 3.7mm                    |
| Shutter Speed            | 1/50(1/60) ~ 1/100,000 SEC       |
| Video Output             | 1.0Vp-p, 75Ω                     |
| Scanning Frequency       | Horz: 15.625KHz / Vert: 50Hz     |
| Scanning System          | 2:1 interlace / internal         |
| Horizontal Resolution    | 420 TV Lines                     |
| Minimum Illumination     | 0.1LUX (F1.2)/0 LUX (in IR mode) |
| Gamma Correction         | 0.45                             |
| S/N Ratio                | ≥ 48dB (AGC OFF)                 |
| White Balance            | Automatic White Balance          |
| AGC and BLC              | ON                               |
| IR Capability            | 24 pcs IR-LED                    |
| IR Illumination Distance | More than 15m                    |
| Operating Temperature    | -10~50°C                         |
| Water Resistance         | IP 66                            |
| Lens                     | 6mm/F2.0                         |
| Dimensions (mm)          | 66(ç) x 134(L)                   |
| Weight (kgs)             | 0.5                              |
| Power Source             | DC12V                            |
| Power Consumption        | 120mA (IR OFF), 350mA (IR ON)    |

## IRCAM600 External Day/Night Camera



- 560 TVL
- 2.8-12mm varifocal lens
- Up to 30m Infra Red illumination
- 12v DC 400mA (IR-on)
- Weatherproof IP66 rating

|                          |                                   |
|--------------------------|-----------------------------------|
| Signal System            | PAL                               |
| Effective Pixels         | 752(H) – 582(V)                   |
| Image sensor             | 1/3" SONY Super HAD CCD           |
| Sensing Area             | 4.9mm x 3.7mm                     |
| Shutter Speed            | 1/50(1/60) ~ 1/100,000 SEC        |
| Video Output             | 1.0Vp-p, 75Ω                      |
| Scanning Frequency       | Horz: 15.62KHz / Vert: 50Hz       |
| Scanning System          | 2:1 interlace / internal          |
| Horizontal Resolution    | 560 TV Lines                      |
| Minimum Illumination     | 0.01Lux (F1.2)/0.00LUX(inIR Mode) |
| Gamma Correction         | 0.45                              |
| S/N Ratio                | ≥ 50dB (AGC OFF)                  |
| White Balance            | Automatic White Balance           |
| AGC and BLC              | ON                                |
| IR Capability            | 42 pcs 5 IR-LED                   |
| IR Illumination Distance | More than 30m                     |
| Operating Temperature    | -10~50°C                          |
| Water Resistance         | IP 66                             |
| Lens                     | 2.8-12mm Manual Varifocal         |
| Dimensions (mm)          | 145(L) x 85(W) x 82(c)            |
| Weight (kgs)             | 0.65                              |
| Power Source             | DC12V                             |
| Power Consumption        | 120mA (IR OFF), 400mA (IR ON)     |

## IRCAM700 External Day/Night Camera

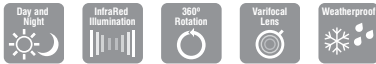


- 560 TVL
- 9-22mm varifocal lens
- Up to 50m Infra Red illumination
- 12v DC 500mA (IR-on)
- Weatherproof IP66 rating

|                          |                                    |
|--------------------------|------------------------------------|
| Signal System            | PAL                                |
| Effective Pixels         | 752(H) x 582(V)                    |
| Image sensor             | 1/3" SONY Super HAD CCD            |
| Sensing Area             | 4.9mm x 3.7mm                      |
| Shutter Speed            | 1/50(1/60) ~ 1/100,000 SEC         |
| Video Output             | 1.0Vp-p, 75Ω                       |
| Scanning Frequency       | Horz: 15.625KHz / Vert: 50Hz       |
| Scanning System          | 2:1 interlace / internal           |
| Horizontal Resolution    | 560 TV Lines                       |
| Minimum Illumination     | 0.01Lux (F1.2) / 0LUX (IN IR MODE) |
| Gamma Correction         | 0.45                               |
| S/N Ratio                | More than ≥ 50dB (AGC OFF)         |
| White Balance            | Automatic White Balance            |
| AGC and BLC              | ON                                 |
| IR Capability            | 36 pcs 5 IR-LED                    |
| IR Illumination Distance | More than 50m                      |
| Operating Temperature    | -10~50°C                           |
| Water Resistance         | IP 66                              |
| Lens                     | 9 to 22mm Manual Varifocal         |
| Dimensions (mm)          | 255(L) x 100(W) x 185(H)           |
| Weight (kgs)             | 1.05                               |
| Power Source             | DC12V                              |
| Power Consumption        | 120mA (IR OFF), 500mA (IR ON)      |

# CCTV CAMERAS

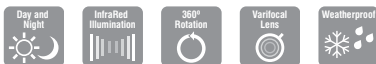
## IRCAM900 External Day/Night Camera



- 560 TVL
- 6-50mm varifocal lens
- Up to 50m Infra Red illumination
- 12v DC 500mA (IR-on)
- Weatherproof IP66 rating

|                          |                                  |
|--------------------------|----------------------------------|
| Signal System            | PAL                              |
| Effective Pixels         | 752(H) x 582(V)                  |
| Image sensor             | 1/3" SONY Super HAD CCD          |
| Sensing Area             | 4.9mm x 3.7mm                    |
| Shutter Speed            | 1/50(1/60) ~ 1/100,000 SEC       |
| Video Output             | 1.0Vp-p, 75Ω                     |
| Scanning Frequency       | Horz: 15.625KHz / Vert: 50Hz     |
| Scanning System          | 2:1 interlace / internal         |
| Horizontal Resolution    | 560 TV Lines                     |
| Minimum Illumination     | 0.2Lux (F1.2)/ 0LUX (in IR mode) |
| Gamma Correction         | 0.45                             |
| S/N Ratio                | ≥ 50dB (AGC OFF)                 |
| White Balance            | Automatic White Balance          |
| AGC and BLC              | ON                               |
| IR Capability            | 36 pcs IR-LED                    |
| IR Illumination Distance | More than 50m                    |
| Operating Temperature    | -10~50°C                         |
| Water Resistance         | IP 66                            |
| Lens                     | 6 to 50mm Manual Varifocal       |
| Dimensions (mm)          | 290(L)x 105(W)x 185(H)           |
| Weight (kgs)             | 1.05                             |
| Power Source             | DC12V                            |
| Power Consumption        | 120mA (IR OFF), 500mA (IR ON)    |

## IRCAM1000 External Day/Night Camera



- 560 TVL
- 5-50mm varifocal lens
- Up to 50m Infra Red illumination
- 12v DC 800mA (IR-on)
- Weatherproof IP66 rating

|                          |                                  |
|--------------------------|----------------------------------|
| Signal System            | PAL                              |
| Effective Pixels         | 752(H) - 582(V)                  |
| Image sensor             | 1/3" SONY Super HAD CCD          |
| Shutter Speed            | 1/50(1/60) ~ 1/12 0,000 SEC      |
| Video Output             | 1.0Vp-p, 75Ω                     |
| Scanning Frequency       | Horz: 15.62KHz / Vert: 50Hz      |
| Scanning System          | 2:1 interlace / internal         |
| Horizontal Resolution    | 560 TV Lines                     |
| Minimum Illumination     | 0.00006(LUX) /0.00LUX(inIR Mode) |
| Gamma Correction         | 0.45                             |
| S/N Ratio                | More than ≥ 50dB (AGC OFF)       |
| White Balance            | Automatic White Balance          |
| AGC and BLC              | ON                               |
| IR Capability            | 15 pcs 5 IR-LED                  |
| IR Illumination Distance | 50m                              |
| Operating Temperature    | -10~50°C                         |
| Water Resistance         | IP 66                            |
| Lens                     | 5 to 50mm Manual Varifocal       |
| Dimensions (mm)          | 97(ø) x 200(L)                   |
| Weight (kgs)             | 2                                |
| Power Source             | DC12V                            |
| Power Consumption        | 800mA max                        |

## DOMEMICRO Internal Dome Camera

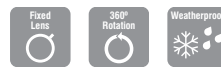
- 420 TVL
- 3.6mm fixed lens
- 12v DC 120mA



|                       |                              |
|-----------------------|------------------------------|
| Signal system         | PAL                          |
| Effective Pixels      | 500(H) x 582(V)              |
| Image sensor          | 1/3" SONY Super HAD CCD      |
| Sensing Area          | 4.9mm x 3.7mm                |
| Shutter Speed         | 1/50(1/60) ~ 1/100,000 SEC   |
| Video Output          | 1.0 Vp-p, 75Ω                |
| Scanning Frequency    | Horz: 15.625KHz / Vert: 50Hz |
| Scanning System       | 2:1 interlace / internal     |
| Horizontal Resolution | 420 TV Lines                 |
| Minimum Illumination  | 0.1LUX (F1.2)                |
| Gamma Correction      | 0.45                         |
| S/N Ratio             | ≥ 48dB (AGC OFF)             |
| White Balance         | Automatic White Balance      |
| AGC and BLC           | ON                           |
| Operating Temperature | -10~50°C                     |
| Lens                  | 3.6mm/F2.0                   |
| Dimensions (mm)       | 70(c) x 52(H)                |
| Weight (kgs)          | 0.08                         |
| Power Source          | DC12V                        |
| Power Consumption     | 120mA                        |

## MINIDOME Internal/External Dome Camera

- 420 TVL
- 2.8mm fixed lens
- 12v DC 120mA
- Weatherproof IP65 rating



|                       |   |
|-----------------------|---|
| Image Sensor          | 1/3 SONY SuperHAD CCD                         |
| Effective Pixels      | 500(H)×582(V)                                 |
| Signal System         | PAL   |
| Horizontal Resolution | 420TV Lines                                   |
| Scanning System       | 2:1 Interlace                                 |
| Sync System           | Internal                                      |
| Minimum Illumination  | 0.1Lux/F1.2                                   |
| S/N Ratio             | More Than 48dB(AGC OFF)                       |
| Gamma                 | 0.45  |
| Electrical Shutter    | NTSC: 1/60-1/120,000S<br>PAL: 1/50-1/120,000S |
| White Balance         | ATW   |
| AGC and BLC           | Auto  |
| Lens Mount            | Built-in Fixed Lens(f=2.8mm)                  |
| Video Output          | 1.0Vp-p(75Ω Composite)                        |
| Power Requirement     | DC12V±10% & 200mA                             |
| Dimension             | 94mm(℄)×68mm(H)                               |
| Weight                | Approx 400g                                   |
| Storage Temperature   | -30°C To +60°C                                |
| Operating Temperature | -10°C To +45°C                                |





## IRDOME Internal Dome Camera

- 420 TVL
- 4mm fixed lens
- Up to 10m Infra Red illumination
- 12v DC 350mA (IR-on)

|                          |  |
|--------------------------|--|
| Image Sensor             | 1/3" Colour SONY CCD                                     |
| Effective Pixels         | PAL: 500(H) x 582(V)<br>NTSC: 510(H) x 492(V)            |
| Signal System            | PAL/NTSC   |
| Resolution               | 420TVL   |
| Minimum Illumination     | 0.2Lux/F2.0, 0Lux (IR On)                                |
| LENS                     | Board Lens 4mm   |
| S/N Ratio                | More than 48dB (AGC OFF)                                 |
| Exposure Mode            | EE   |
| Electronic Shutter Speed | PAL: 1/50-1/100,000(sec)<br>NTSC: 1/60 - 1/100,000 (sec) |
| Gamma                    | 0.45   |
| White Balance            | ATM  |
| AGC Gain Control         | Auto   |
| Day & Night              | Auto   |
| SYNC System              | Internal   |
| Infrared Luminary        | 24 pcs IR-LED  |
| Illumination Distance    | 10m  |
| Video Output             | 1.0Vp-p, 75Ω   |
| Power Requirement        | DC12V  |
| Power Consumption        | 120mA (IR OFF), 350±5%mA (IR ON)                         |
| Operation Temp.          | -10°C ~ 50°C   |
| Dimensions (mm)          | 95(c) x 85(H)  |
| Weight                   | Approx 170g  |



## IRDOMEXT External Dome Camera

- 420 TVL
- 4mm fixed lens
- Up to 8m Infra Red illumination
- 12v DC 300mA (IR-on)

|                       |                                     |
|-----------------------|-------------------------------------|
| Effective Pixels      | 500(H) X 582(V)                     |
| Image sensor          | 1/3" SONY Super HAD CCD             |
| Sensing Area          | 4.9mm X 3.7mm                       |
| Shutter Speed         | 1/50(1/60) ~ 1/100,000 SEC          |
| Video Output          | 1.0 V P-P OHMS                      |
| Scanning Frequency    | Horz: 15.625KHz / vert: 50Hz        |
| Scanning System       | 2:1 interlace / internal            |
| Horizontal Resolution | 420 TV Lines                        |
| Minimum Illumination  | 0.5LUX(F1.2) / 0.00LUX (IN IR MODE) |
| Gamma Correction      | 0.45                                |
| S/N Ratio             | ≥ 48dB (AGC OFF)                    |
| White Balance         | Automatic White Balance             |
| IR Capability         | 14 pieces IR-LED                    |
| IR Illum. Distance    | More than 8m                        |
| Burst Level           | 1/50                                |
| Operating Temp.       | -10~50°C                            |
| Water Resistance      | IP 65                               |
| Lens Board Lens       | 3.6mm/F2.0                          |
| Dimensions (mm)       | L160 x W124 x H110 (incl. bracket)  |
| Weight                | 730g approx.                        |
| Power Source          | DC12V                               |
| Power Consumption     | 120mA (IR OFF) 300mA (IR ON)        |



## DOMEVF Internal/External Dome Camera



- 420 TVL
- 4-9mm varifocal lens
- 12v DC 120mA
- Weatherproof IP65 rating

|                       |                              |
|-----------------------|------------------------------|
| Signal System         | PAL                          |
| Effective Pixels      | 500(H) x 582(V)              |
| Image sensor          | 1/3" SONY Super HAD CCD      |
| Sensing Area          | 4.9mm x 3.7mm                |
| Shutter Speed         | 1/50(1/60) ~ 1/100,000 SEC   |
| Video Output          | 1.0 Vp-p, 75Ω                |
| Scanning Frequency    | Horz: 15.625KHz / Vert: 50Hz |
| Scanning System       | 2:1 interlace / internal     |
| Horizontal Resolution | 420 TV Lines                 |
| Minimum Illumination  | 0.1 LUX (F1.2)               |
| Gamma Correction      | 0.45                         |
| S/N Ratio             | ≥ 48dB (AGC OFF)             |
| White Balance         | Automatic White Balance      |
| AGC                   | ON                           |
| BLC                   | ON                           |
| Burst Level           | 1/50                         |
| Operating Temperature | -10~50°C                     |
| Water Resistance      | IP 65                        |
| Lens                  | 4-9mm Manual Varifocal       |
| Dimensions (mm)       | 105(ϕ) x 75(H)               |
| Weight (kgs)          | 0.4                          |
| Power Source          | DC12V                        |
| Power Consumption     | 120mA                        |



## IRDOMEXTVF External Dome Camera



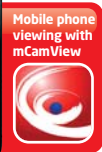
- 560 TVL
- 2.8-12mm varifocal lens
- Up to 30M Infra Red illumination
- 12v DC 450mA (IR-on)
- Weatherproof IP65 rating

|                          |                                    |
|--------------------------|------------------------------------|
| Signal System            | PAL                                |
| Effective Pixels         | 752(H) x 582(V)                    |
| Image sensor             | 1/3" SONY Super HAD CCD            |
| Sensing Area             | 4.9mm x 3.7mm                      |
| Shutter Speed            | 1/50(1/60) ~ 1/100,000 SEC         |
| Video Output             | 1.0Vp-p, 75Ω                       |
| Scanning Frequency       | Horizontal: 15.625KHz / Vert: 50Hz |
| Scanning System          | 2:1 interlace / internal           |
| Horizontal Resolution    | 560 TV Lines                       |
| Minimum Illumination     | 0.01Lux (F1.2)/0.00LUX(IN IRMode)  |
| Gamma Correction         | 0.45                               |
| S/N Ratio                | ≥ 50dB (AGC OFF)                   |
| White Balance            | Automatic White Balance            |
| AGC and BLC              | ON                                 |
| IR Capability            | 42 pcs ϕ IR-LED                    |
| IR Illumination Distance | More than 30m                      |
| Operating Temperature    | -10~50°C                           |
| Water Resistance         | IP 65                              |
| Lens                     | 2.8-12mm Manual Varifocal          |
| Dimensions (mm)          | L178 x W138 x H129 (incl. bracket) |
| Weight (kgs)             | 0.7                                |
| Power Source             | DC12V                              |
| Power Consumption        | 120mA (IR OFF), 450mA (IR ON)      |



# IP CAMERA

## IPCAM-PT - Wireless IP Camera



No router programming, no fixed IP requirement, no port forwarding, just plug and play.

- Wired or wireless
- Live audio feed
- Various mounting options
- Full mobile viewing and recording via mCamView APP
- Pan and tilt control
- Micro-SD card for local video storage



|                    |  |
|--------------------|--|
| Power              | DC 5V, 2A  |
| Pan/Tilt control   | Pan range 130° (-65° ~ 65°), Tilt range 90° (0° ~ 90°), Auto pan mode, Auto patrol mode  |
| Image sensor       | RGB VGA 1/4 inch CMOS<br>Automatic exposure control, automatic white balance, automatic gain control, automatic brightness control |
| Light sensitivity  | 0.2 Lux  |
| Lens               | 3.2 mm   |
| Micro SD card slot | One micro SD card slot for micro SD card insertion   |
| Audio              | Built-in microphone for audio monitoring   |
| Dimensions (mm)    | 120(H) x 91(W) x 84(D)   |
| Weight 3           | 50 g camera body only  |

IP (internet protocol) cameras have been successfully integrated into the world of CCTV for a number of years. They offer an unbeatable solution for users requiring an effective remote viewing capability across the globe using their existing IT facilities. To date the installer has required a level of IT knowledge to create a stable connection that copes with the computer networks in built anti virus security.

The new IP cams put the world of IP CCTV in the hands of the relative novice. There's no need for port forwarding, router configuration or firewall opening. As with many of ESP's products the IPcams are very much plug and play.

### EASY 3 STEP CONFIGURATION



Plug the camera into a spare port on the back of the wireless broadband router. Input the access key to allow wireless communication.



Launch the software on any computer which has network or internet access or load the mCamView app on a smart phone.



Then simply enter the unique registration code of the camera to complete the linking process.

Within minutes a remote viewing, recording IP based CCTV system is created. The software will allow connection and recording of up to 32 cameras. The attractive user interface allows separate image control, motion record settings and of course viewing of all cameras simultaneously. There's even pan and tilt control capability from a smart phone.

## SPYCAM Spy Camera






- 420TVL
- 3.6mm fixed lens
- 12v DC 120mA
- For Covert Surveillance applications
- Complete with additional optional pin hole lens

|                       |                                  |
|-----------------------|----------------------------------|
| Signal                | PAL                              |
| Effective Pixels      | 500(H) x 582(V)                  |
| Image sensor          | 1/3" SONY Super HAD CCD          |
| Sensing Area          | 4.9mm x 3.7mm                    |
| Shutter Speed         | 1/50(1/60) ~ 1/100,000 SEC       |
| Video Output          | 1.0Vp-p, 75Ω                     |
| Scanning Frequency    | Horz: 15.625KHz / Vert: 50Hz     |
| Scanning System       | 2:1 interlace / internal         |
| Horizontal Resolution | 420 TV Lines                     |
| Minimum Illumination  | 0.1LUX (F1.2)/0 LUX (in IR mode) |
| Gamma Correction      | 0.45                             |
| S/N Ratio             | ≥ 48dB (AGC OFF)                 |
| White Balance         | Automatic White Balance          |
| AGC and BLC           | ON                               |
| Operating Temperature | -10~50°C                         |
| Lens                  | 3.6mm/F2.0                       |
| Option Pinhole Lens   | 3.7mm/F2.0                       |
| Dimensions (mm)       | 38(L) x 38(W)                    |
| Weight (kgs)          | 0.02                             |
| Power Source          | DC12V                            |
| Power Consumption     | 120mA                            |



## CCTV CAMERA SELECTION

To select the correct camera consider if the location is internal or external (bear in mind that external cameras are also suitable for internal use). Decide which lens size will achieve the desired image from the grid and then choose either the standard camera or Pro version where available.

| Distance from Camera (meters) | Viewing Capability  |   |  |
|-------------------------------|---|---|--|
|                               | < 3 meters >  | < 10 meters >   | < 15 meters >  |
|                               |  |  |  |
|                               | Lens size required  | Lens size required  | Lens size required   |
| 10                            | 9-22mm  | 2.8-12mm  | 2.8-12mm   |
| 20                            | 5-50mm  | 9-22mm  | 4-9mm  |
| 30                            | 5-50mm  | 9-22mm  | 9-22mm   |
| 50                            | N/A   | 5-50mm  | 9-22mm   |

# CCTV RECORDING

## DVR4iP - 4 Channel Network DVR



- Network capability with Wi-Fi connectivity option
- Silent operation
- Complete with 500GB HD
- VGA output
- USB stick & mouse included

## DVR8iP - 8 Channel Network DVR



- Network capability with Wi-Fi connectivity option
- Silent operation
- Complete with 1TB HD
- VGA output
- USB stick & mouse included

|                            |  |
|----------------------------|--|
| Camera Input               | DVR4iP - 4 Channel<br>DVR8iP - 8 Channel                         |
| Video Input                | DVR4iP - 4 x BNC<br>DVR8iP - 8 x BNC                             |
| Video Output               | 1VGA (1280x1024) +2 x BNC  |
| Audio Input                | 1 x RCA  |
| Audio Output               | 1 x RCA  |
| Operating System           | Embedded Linux OS  |
| Internal HDD               | Supports 1 SATA Device (HDDx1), upto 2TB                         |
| Serial Interface           | RS-485   |
| USB                        | 2 x USB connectors   |
| Dimension                  | 250mm x 225mm x 45mm ( L x W x H )                               |
| Weight (w/o HDD/DVD±RW)    | 1.0 Kg   |
| Adaptor Input              | 100~240V, Output 12V 5A  |
| Power Source               | 60 W   |
| Display Speed              | Digiview4i Pro - 100 fps (PAL)<br>Digiview8i Pro - 200 fps (PAL) |
| Display Resolution (Pixel) | 704 X 576 (PAL)  |
| Recording Compression      | H.264 main profile   |

|                               |   |
|-------------------------------|---|
| Network Interface             | 10/100 Ethernet   |
| Network Protocol              | TCP/IP, PPPoE, DDNS, UPNP, FTP and NTP  |
| Network Application           | Windows XP/VISTA/7/8 (PC Client system)   |
| Network 3G / GPRS             | Windows mobile; iPhone; Blackberry;<br>Symbian; Android system and 3G   |
| Motion Detection              | Detected Frames: Unlimited / Channel<br>Sensitivity: 6 levels for each channel<br>Area: 192 (16x12) surveyed area,<br>Programmable individually         |
| DVR/OSD Control GUI           | 16-bit True Color   |
| DVR/OSD Control Languages     | English, French, Portugal, Russia, Italian,<br>Spanish, Thai, Greek, Japanese, German,<br>Turkish, Polski , Finnish and Farsi.Chinese<br>(28 Languages) |
| DVR/OSD Camera Title          | English/number  |
| DVR/OSD Mouse                 | YES   |
| DVR/OSD Remote Controller     | IR Remote Control   |
| DVR/OSD System Upgrade        | via USB / Network   |
| DVR/OSD Pan/Tilt/Zoom Control | Control From RS485 Interface  |



## DVR8iPro - 8 Channel Network DVR with DVR Drive



- DVD and USB back up
- Network capability
- VGA output
- Complete with 1TB HDD
- Remote control
- USB stick & mouse included

## DVR16iPro - 16 Channel Network DVR with DVR Drive



- DVD and USB back up
- Network capability
- VGA output
- Complete with 1TB HDD
- Remote control
- USB stick & mouse included

| SYSTEM             |   |
|--------------------|---|
| Format             | H.264 main profile Hi3515   |
| Master processor   | Technical grade embedded micro controller   |
| O.S.               | Embedded Linux operation  |
| System resources   | Multichannel real-time recording, playback, multi users network ops, simultaneously, USB backup output                              |
| INTERFACE          |   |
| Operation          | 16 bit true colour graphical operation interface, Interface support mouse operation   |
| VIDEO              |   |
| Video standard     | PAL (625TVLine, 50fps); NTSC (525TVLine, 60fps)   |
| Monitoring quality | PAL, D1 (704x576); NTSC, D1(704x480)  |
| Code capacity      | CIF: 400FPS PAL, 480fps NTSC  |
| Motion detection   | 396(22x18) surveyed area can be set in everyone frame, Multilevel sensitivity can be set  |
| Video output       | 1 channel BNC, 1.0Vp-p, 75 Ohm, 1 channel VGA output  |
| Audio input        | DVR16iPro - 4 channel RCA, 200-2800mV, 30KΩ<br>DVR8iPro - 8 channel RCA   |
| Audio output       | 1 channel RCA   |
| Alarm output       | 1 channel   |
| Network            | I.E. viewing, supports Windows mobile, Symbian, iPhone and black berry, Android cell phone viewing; Central Management System (CMS) |

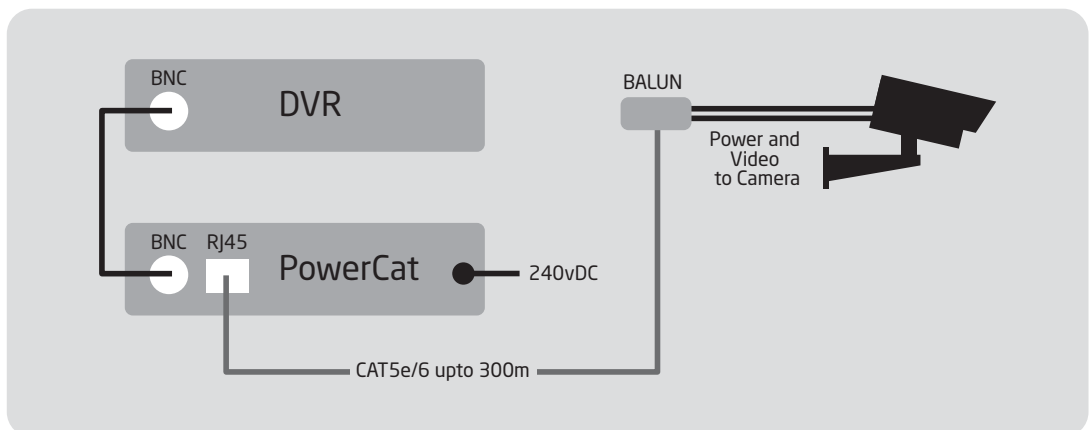
| PTZ                  | 1 x RS485   |
|----------------------|---|
| USB                  | 2 x USB interface   |
| HDD                  | 2 x SATA supports 2TB, DVD-R/RW                                   |
| WiFi, 3G             | Yes   |
| AUDIO                |   |
| Audio compression    | G711A   |
| VoIP                 | Yes   |
| RECORDING & PLAYBACK |   |
| Recording mode       | Manual/alarm/motion detection/timing                              |
| Recording search     | Time point, calendar, event, channel                              |
| STORAGE AND BACK UP  |   |
| Occupation HDD       | Audio: 28.8Mbyte/hour + video: space in channels 25~450Mbyte/hour |
| Record storage       | DVD-R/RW, Local HDD, DVD-R/RW and network                         |
| Backup mode          | DVD-R/RW, Network, USB HDD, USB DVD-R/RW                          |
| OTHER                |   |
| Power                | 12V/4.15A external adaptor  |
| Dissipation          | <10W (w/o HDD)  |
| Working temp.        | 0 degree - 55 degree  |
| Working humidity     | 10% - 90%   |
| Dimension            | 353 x 325 x 61 mm   |
| Weight               | 3.8KG/carton  |



## POWERCAT - 4, 8 and 16 Channel Power Video Hubs

PowerCat power video hubs represent a revolution in CCTV cabling. Available in 4, 8 and 16 channel variants they support power to the cameras and video signal from the cameras up to 300m across Cat5e or Cat6 cable. Using superior interference technology video and power signals co-exist to provide stable imagery and trouble free installation.

- CAT5 cabling solution for 12vDC CCTV installations
- Video and power via single CAT5 cable per channel up to 300M
- Simply create correct length CAT5 cable run with RJ45 plugs to complete system
- Kit includes camera transmitter baluns and pre made BNC links to DVR
- 12vDC power for camera up to 1 amp (1000ma) per channel
- No requirement for local power supply to camera




**NEW**

## EZ-WF - Wirefree Video Signal Transmitter

The EZ-WF is designed to provide a digital wire free solution for the transmission of a video signal where a cable run would be expensive or troublesome. The transmitter and receiver are factory "paired" making for a simple installation.

- 150M open field range
- Stable digital transmission
- FCC approved
- Pre coded pairing
- Up to 4 units in single location
- IP66 rated housings
- Wired output available on transmitter





Ideal for use with ESP Pro range cameras



## TM PRO Handheld Test Monitor

- 3.5" TFT low reflection screen
- 12vDC 400ma power output for camera
- Lithium rechargeable (5 hours working time)
- Integral CAT5 cable checker
- Durable design with quality carry case
- Handheld or wrist mount

|                  |  |
|------------------|--|
| Display          | 3.5" TFT Color LCD   |
| Image Resolution | 640 x 480  |
| Video In         | 1 Video In (BNC connector)   |
| Power Out        | 1 DC power out (Support CCD camera of power source/Max electric current 400mA) |
| System Format    | NTSC / PAL   |
| Status Indicator | 2 LED (Power IND = Green / Charging IND = Red)                                 |
| Power Source     | Built-in rechargeable Lithium battery  |
| Dimension mm     | 180 (L) x 98 (W) x 30 (H)  |
| Weight           | 250g   |



## Boxed power supplies

- CPS4 - 4 way 4 Amp
- CPS9 - 9 way 9 Amp
- CPS16 - 16 way 16 Amp
- 12VDC power limited output
- Protected outputs
- 100VAC-240VAC (50/60Hz) universal input
- Filtered and electronically regulated output
- Short circuit and thermal overload protection
- AC input and DC output LED indicators
- Dimensions CPS4: 182(W) x 260(H) x 66(D)mm  
CPS9 and CPS16: 322(W) x 322(H) x 86(D)mm



## PSIL-1 Camera Power Supply

- For use with CCTV cameras
- 12 volt
- 1 amp

## CAB-BNC Cable Coupler Kit



- BNC connector for use with CCTV dual function cables - CAB10, CAB20, CAB40 and CAB80

## Dual Function Cables



- CAB10 - 10m cable
- CAB20 - 20m cable
- CAB40 - 40m cable
- CAB80 - 80m cable
- Power and BNC video cables for use with digital CCTV equipment

## TFT-BRA1 Fixed Bracket



- TFT-BRA1
- Closest to wall fit
- Picture style finish
- To fit screens 12-23" (30-58cm)
- Supports 20kg (44lbs)

## TFT-BRA2 - Tilt, Pivot & Rotate Bracket



- 27° tilt 180° swivel
- Close to wall fit
- To fit screens 12-23" (30-58cm)
- Supports 20kg (44lbs)

## DOMEDUMMY Dome Dummy Camera



- Medium external dummy camera
- Optional red LED
- Battery housed internally

## CAM2001 - External Dummy Camera



- Medium external dummy cameras
- Optional red LED
- Dimensions (mm) 245L x 100W x 185H
- Battery housed in junction box

## WARN1 External Warning Sign



- External durable use
- Dimensions 420mm x 300mm
- Space available to add scheme ownership details

## Anti Vandal Cage1



- CAGE1**
- 360W x 360D x 460H
  - Galvanized steel
  - Easily wall mountable

## Anti Vandal Cage2



- CAGE2**
- 210W x 255D x 305H
  - Galvanized steel
  - Easily wall mountable



# EXTERNAL AREA PROTECTION

The External Area Protection range is the ideal solution for securing driveways, gardens, forecourts and yards of both domestic and commercial properties.

GuardCam is a complete all-in-one PIR floodlight, camera, speaker and DVR system. Simply connect to mains power, fix to wall, set the time and date and switch on! AlertCam is a standalone external PIR detector with integral video camera, recording facility and wire free alert triggering.

NightHawk is a full feature combined PIR floodlight with incredibly low running costs and impressive usage life.





Hore Street

# GuardCam<sup>®</sup>

Combined security camera floodlight system



On approach GuardCam will...

- Detect the intruder
- Floodlight the area
- Initiate a video recording
- Deliver an audible warning

Simply connect to mains power, fix to wall, set the time and date and switch on!



### Eco friendly Grade C 230w halogen lamp

GuardCam and GuardCam RF are supplied with a low energy Grade C halogen lamp offering an equivalent to older Grade D lamps with lower running costs.



### High resolution digital camera

GuardCam's integral camera offers clear image recording in video or still frame format. Night images retain colour and clarity due to automatic halogen light illumination.



### Built in DVR records directly to a 2GB SD card

Records up to 750, twenty second video sessions or 60,000 still images onto the supplied 2GB SD card (max. card size 32GB). Oldest images are deleted and overwritten with new images. The SD card and time date controls are secured behind a waterproof door.



### Time and date setting

A simple set up procedure will allow you to input the exact year, month, day and time that will remain within GuardCam ready to be applied to all recordings. In the event of mains power failure internal back up batteries ensure the settings are not lost.



### Easy replay on Windows Media Player

GuardCam comes complete with an SD to USB converter. Simply remove the SD card from GuardCam insert into the converter and plug into your PC's USB port. The recorded images can then be launched and stored using Windows Media Player.



### PIR motion detector with integral photocell

GuardCam detects the presence of intruders with proven PIR (passive infra red) technology at a distance of up to 12 metres from the unit. A photocell is employed to ensure activation is restricted to day or night at the users discretion.



### PIR sensitivity and time control

GuardCam's PIR can be adjusted to provide the best coverage whilst avoiding false triggers from passing traffic, animals etc. The time control adjusts how long the halogen light will remain activated after movement has ceased.



### Audible alert speaker with choice of warnings

GuardCam has the option to deliver an audible message upon activation. "Warning you are being recorded by a security camera", a barking dog or one of two messages that you can record yourself. There is also the option to have no voice alert.



### Self recording

Option to record two self recorded alerts, instructional or advisory messages via GuardCam's built in microphone.



### 3 mode selection

Mode selection allows the user to choose the most suitable combination of GuardCam's functions. Light plus video at night, sound plus video in the day etc.





## GuardCam Combined security floodlight

GuardCam is a complete all-in-one PIR floodlight, camera, speaker and DVR systems. Simply connect to mains power, fix to wall, set the time and date and switch on!

- Detect the intruder
- Floodlight the area
- Initiate a video recording
- Deliver an audible warning
- Ability to record users own warning message
- Captures 60,000 still images or 750 twenty second video clips with 2GB card supplied
- Maximum card size allowable now 32GB

|                           |                   |
|---------------------------|-------------------|
| Supply Voltage            | 100-240VAC        |
| Current drain (activated) | 1.33amp           |
| Current drain (quiescent) | 0.005amp          |
| Halogen output            | 230w eqv. to 300w |
| Halogen lamp grade        | Grade C           |
| PIR detection angle       | 160 deg           |
| PIR detection range       | 12 metres         |
| Camera exposure control   | Automatic         |
| Camera white balance      | Automatic         |
| Camera sharpness          | Automatic         |
| SD card format            | FAT Maximum 32GB  |
| Image Format              | JPEG / AVI        |
| IP rating                 | IP44              |
| Dimensions                | 180 x 190 x 315mm |
| Weight                    | 1.206KG           |



## GuardCam RF RF combined security floodlight

GuardCam RF has all the features of GuardCam plus the added benefit of being able to trigger a remote chime/alarm or switching device. Compatible with the included AlertCam RA and optional AlertCam RS.

- Detect the intruder
- Floodlight the area
- Initiate a video recording
- Deliver an audible warning
- Ability to record users own warning message
- Captures 60,000 still images or 750 twenty second video clips with 2GB card supplied
- Maximum card size allowable now 32GB
- Multiple RA and RS units possible

|                           |                   |
|---------------------------|-------------------|
| Supply Voltage            | 100-240VAC        |
| Current drain (activated) | 1.33amp           |
| Current drain (quiescent) | 0.005amp          |
| Halogen output            | 230w eqv. to 300w |
| Halogen lamp grade        | Grade C           |
| PIR detection angle       | 160 deg           |
| PIR detection range       | 12 metres         |
| Camera exposure control   | Automatic         |
| Camera white balance      | Automatic         |
| Camera sharpness          | Automatic         |
| SD card format            | FAT Maximum 32GB  |
| Image Format              | JPEG / AVI        |
| IP rating                 | IP44              |
| Dimensions (mm)           | 180 x 190 x 315mm |
| Weight                    | 1.206KG           |

# GuardCam<sup>LED</sup>

## Combined security camera LED floodlight system



Low Energy  
8w LED  
equivalent to  
150w halogen  
approx 40,000  
hour life

### On approach GuardCam LED will...

- Detect the intruder
- Floodlight the area
- Initiate a video recording
- Deliver an audible warning

Simply connect to mains power,  
fix to wall, set the time and date  
and switch on!



#### Eco friendly high intensity LED

GuardCam LED is supplied with an 8w high intensity eco friendly LED array of 1000 lumen output equivalent to 150w halogen lamp approximately 40,000 hour usage life.



#### High resolution digital camera

GuardCam's integral camera offers clear image recording in video or still frame format. Night images retain colour and clarity due to automatic halogen light illumination.



#### Built in DVR records directly to a 2GB SD card

Records up to 750, twenty second video sessions or 60,000 still images onto the supplied 2GB SD card (max. card size 32GB). Oldest images are deleted and overwritten with new images. The SD card and time date controls are secured behind a waterproof door.



#### Time and date setting

A simple set up procedure will allow you to input the exact year, month, day and time that will remain within GuardCam ready to be applied to all recordings. In the event of mains power failure internal back up batteries ensure the settings are not lost.



#### Easy replay on Windows Media Player

GuardCam comes complete with an SD to USB converter. Simply remove the SD card from GuardCam insert into the converter and plug into your PC's USB port. The recorded images can then be launched and stored using Windows Media Player.



#### PIR motion detector with integral photocell

GuardCam detects the presence of intruders with proven PIR (passive infra red) technology at a distance of up to 12 metres from the unit. A photocell is employed to ensure activation is restricted to day or night at the users discretion.



#### PIR sensitivity and time control

GuardCam's PIR can be adjusted to provide the best coverage whilst avoiding false triggers from passing traffic, animals etc. The time control adjusts how long the halogen light will remain activated after movement has ceased.



#### Audible alert speaker with choice of warnings

GuardCam has the option to deliver an audible message upon activation. "Warning you are being recorded by a security camera", a barking dog or one of two messages that you can record yourself. There is also the option to have no voice alert.



#### Self recording

Option to record two self recorded alerts, instructional or advisory messages via GuardCam's built in microphone.



#### 3 mode selection

Mode selection allows the user to choose the most suitable combination of GuardCam's functions. Light plus video at night, sound plus video in the day etc.





## GuardCam LED Combined security LED floodlight

GuardCam LED is a complete all-in-one PIR floodlight, camera, speaker and DVR system. Simply connect to mains power, fix to wall, set the time and date and switch on!

- Detect the intruder
- Floodlight the area
- Initiate a video recording
- Deliver an audible warning
- Ability to record users own warning message
- Captures 60,000 still images or 750 twenty second video clips with 2GB card supplied
- Maximum card size allowable now 32GB

|                           |                   |
|---------------------------|-------------------|
| Supply Voltage            | 100-240VAC        |
| Current drain (activated) | 0.4amp            |
| Current drain (quiescent) | 0.005amp          |
| LED output                | 1100 Lumens       |
| PIR detection angle       | 160 deg           |
| PIR detection range       | 12 metres         |
| Camera exposure control   | Automatic         |
| Camera white balance      | Automatic         |
| Camera sharpness          | Automatic         |
| SD card format            | FAT Maximum 32GB  |
| Image Format              | JPEG / AVI        |
| IP rating                 | IP44              |
| Dimensions (mm)           | 180 x 190 x 315mm |
| Weight                    | 1.206KG           |



## GuardCam LED RF Combined security LED floodlight

GuardCam LED RF has all the features of GuardCam LED plus the added benefit of being able to trigger a remote chime/alarm or switching device. Compatible with the included AlertCam RA and optional AlertCam RS.

- Detect the intruder
- Floodlight the area
- Initiate a video recording
- Deliver an audible warning
- Ability to record users own warning message
- Captures 60,000 still images or 750 twenty second video clips with 2GB card supplied
- Maximum card size allowable now 32GB

|                           |                   |
|---------------------------|-------------------|
| Supply Voltage            | 100-240VAC        |
| Current drain (activated) | 0.4amp            |
| Current drain (quiescent) | 0.005amp          |
| LED output                | 1100 Lumens       |
| PIR detection angle       | 160 deg           |
| PIR detection range       | 12 metres         |
| Camera exposure control   | Automatic         |
| Camera white balance      | Automatic         |
| Camera sharpness          | Automatic         |
| SD card format            | FAT Maximum 32GB  |
| Image Format              | JPEG / AVI        |
| IP rating                 | IP44              |
| Dimensions (mm)           | 180 x 190 x 315mm |
| Weight                    | 1.206KG           |

# NightHawk<sup>®</sup> LED

NHF Low Energy LED Flood Lights



**NEW**



Build quality is key to the NHF range. Ultra reliable drivers and LEDs combined with a superb weather resistant finish and stainless steel fixings make the NHF a perfect choice for a wide range of floodlighting applications.

CE All models CE certificated to meet the EMC emission limitations required by EN55015:2006 A1:2007 A2:2009

## NHF10 LED Floodlight 10W 900 Lumen output



- Tough weather resistant coating
- Stainless steel fixings
- 50,000 hours LED lifetime
- IP65 Rated
- Cool white (6000-6500K)



|              |                         |
|--------------|-------------------------|
| Voltage      | 85-264V/AC              |
| Power        | 10w                     |
| Lumen output | 900LM                   |
| Colour       | Cool White (6000-6500K) |
| IP Rating    | IP65                    |
| Usage life   | 50,000 hours            |
| Dimensions   | 115 x 85 x 85mm         |

## NHF20 LED Floodlight 20W 1800 Lumen output



- Tough weather resistant coating
- Stainless steel fixings
- 50,000 hours LED lifetime
- IP65 Rated
- Cool white (6000-6500K)



|              |                         |
|--------------|-------------------------|
| Voltage      | 85-264V/AC              |
| Power        | 20w                     |
| Lumen output | 1800LM                  |
| Colour       | Cool White (6000-6500K) |
| IP Rating    | IP65                    |
| Usage life   | 50,000 hours            |
| Dimensions   | 180 x 140 x 100mm       |



## NightHawk Low Energy LED Security Light

- LED floodlight - 1100 lumen output
- 50,000 hours LED life
- Low energy 12.7w maximum power consumption
- 160 degree PIR detector
- Wide spread illumination up to 120°
- Adjustable on time of 5 secs to 5 mins
- Adjustable lux - dusk to dark
- Electronic override function
- Adjustable floodlight direction - Horizontal and vertical axis
- Adjustable PIR direction - Horizontal and vertical axis
- Additional switching capability - 50W LED - 500W halogen
- Ideal for use with up to four NH150LED floodlights
- Weather proof, suitable for external use

|                         |                         |
|-------------------------|-------------------------|
| Power source            | 220 - 240VAC/50Hz       |
| Power consumption       | 12.7w (operational)     |
| Detection method        | Passive Infrared Sensor |
| Detector range          | 10M x 160 degrees       |
| Light output            | 1100 Lumens             |
| Illumination angle      | 120 degrees             |
| Colour                  | 5600K cool white        |
| Time adjustment         | 5 seconds to 5 minutes  |
| Maximum additional load | LED 50W - Halogen 500W  |
| IP rating               | IP55                    |



## NH150 Low Energy LED Flood Light

- LED floodlight - 1100 lumen output
- Wide spread illumination up to 120°
- Low energy 12.1w maximum power consumption
- Adjustable floodlight direction - Horizontal and vertical axis
- Ideal for use with the NightHawk security light which has the capability to switch up to 4 extra NH150LED units
- Weather proof, suitable for external use

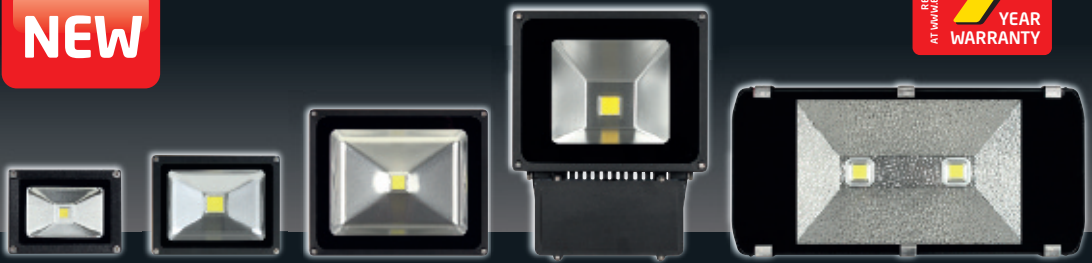
|                         |                        |
|-------------------------|------------------------|
| Power source            | 220 - 240VAC/50Hz      |
| Power consumption       | 12.7w (operational)    |
| Light output            | 1100 Lumens            |
| Illumination angle      | 120 degrees            |
| LED light output colour | 5600K cool white       |
| Time adjustment         | 5 seconds to 5 minutes |
| Maximum additional load | LED 50W - Halogen 500W |
| IP rating               | IP55                   |

# NightHawk<sup>®</sup> LED

NHF Low Energy LED Flood Lights



**NEW**



Build quality is key to the NHF range. Ultra reliable drivers and LEDs combined with a superb weather resistant finish and stainless steel fixings make the NHF a perfect choice for a wide range of floodlighting applications.

CE All models CE certificated to meet the EMC emission limitations required by EN55015:2006 A1:2007 A2:2009

## NHF10 LED Floodlight 10W 900 Lumen output

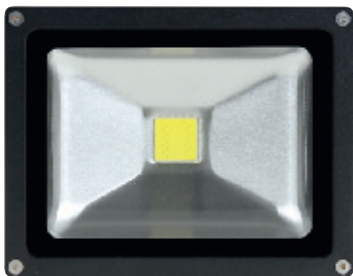


- Tough weather resistant coating
- Stainless steel fixings
- 50,000 hours LED lifetime
- IP65 Rated
- Cool white (6000-6500K)



|              |                         |
|--------------|-------------------------|
| Voltage      | 85-264V/AC              |
| Power        | 10w                     |
| Lumen output | 900LM                   |
| Colour       | Cool White (6000-6500K) |
| IP Rating    | IP65                    |
| Usage life   | 50,000 hours            |
| Dimensions   | 115 x 85 x 85mm         |

## NHF20 LED Floodlight 20W 1800 Lumen output



- Tough weather resistant coating
- Stainless steel fixings
- 50,000 hours LED lifetime
- IP65 Rated
- Cool white (6000-6500K)



|              |                         |
|--------------|-------------------------|
| Voltage      | 85-264V/AC              |
| Power        | 20w                     |
| Lumen output | 1800LM                  |
| Colour       | Cool White (6000-6500K) |
| IP Rating    | IP65                    |
| Usage life   | 50,000 hours            |
| Dimensions   | 180 x 140 x 100mm       |



## NHF50 LED Floodlight 50W 4500 Lumen output

- Tough weather resistant coating
- Stainless steel fixings
- 50,000 hours LED lifetime
- IP65 Rated
- Cool white (6000-6500k)



|              |                         |
|--------------|-------------------------|
| Voltage      | 85-264V/AC              |
| Power        | 50w                     |
| Lumen output | 4500LM                  |
| Colour       | Cool White (6000-6500K) |
| IP Rating    | IP65                    |
| Usage life   | 50,000 hours            |
| Dimensions   | 290 x 235 x 150mm       |



## NHF80 LED Floodlight 80W 7000 Lumen output

- Tough weather resistant coating
- Stainless steel fixings
- 50,000 hours LED lifetime
- IP65 Rated
- Cool white (6000-6500k)



|              |                         |
|--------------|-------------------------|
| Voltage      | 85-264V/AC              |
| Power        | 80w                     |
| Lumen output | 7000LM                  |
| Colour       | Cool White (6000-6500K) |
| IP Rating    | IP65                    |
| Usage life   | 50,000 hours            |
| Dimensions   | 360 x 280 x 113mm       |



## NHF140 LED Floodlight 140W 12500 Lumen output

- Tough weather resistant coating
- Stainless steel fixings
- 50,000 hours LED lifetime
- IP65 Rated
- Cool white (6000-6500k)



|              |                         |
|--------------|-------------------------|
| Voltage      | 85-264V/AC              |
| Power        | 140w                    |
| Lumen output | 12500LM                 |
| Colour       | Cool White (6000-6500K) |
| IP Rating    | IP65                    |
| Usage life   | 50,000 hours            |
| Dimensions   | 600 x 287 x 114mm       |



# AlertCam

Complete external PIR camera system with RF controlled light and alarm activation

AlertCam is a standalone external PIR detector with integral video camera, recording facility and wire free alert triggering. AlertCam is an ideal solution for the protection of external areas such as driveways, gardens, forecourts, yards and farms.

On triggering AlertCam can internally switch up to 500w of local lighting, commence video recording of activity with time and date stamping and send a wire free trigger signal to any number of remote chime/ alarm units or remote 1500w switching devices.



**AlertCam<sup>RA</sup>**  
Wire free remote chime/ alarm



**AlertCam**  
Combined external PIR camera with remote RF trigger



**AlertCam<sup>RS</sup>**  
Wire free remote switching unit



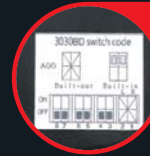
### External Weatherproof PIR

AlertCam is designed to be weatherproof and carries an IP55 rating. The PIR has a range of 10m and a 160 degree angle of detection.



### Local light switching

AlertCam can be used to switch up to 500W of incandescent or 50W of LED lighting directly from the unit, plus an additional 1500W using the optional AlertCam RS.



### RF Trigger output

In addition to its built in light switching function AlertCam also features integral RF capability that can be used to send trigger signals to optional remote light switching or Alarm devices. (AlertCam RS and AlertCam RA)



### Integral camera

Captures high resolution 640 x 480 images at up to 10 metres.



### Time And Date stamp

Time and date is set within the unit and all recordings will include a time and date stamp on playback.



### Integral recording unit

Upon trigger from the PIR AlertCam stores images directly at two frames per second in a twenty second sequence directly to an on-board SD card hidden in a sealed compartment. Max size 32GB (approximately 1 million images). AlertCam will overwrite oldest images should SD card become full.



### Image Playback

Captured images are viewed on a PC or laptop from the SD card or directly to a laptop via a short USB cable. Software is included to support this function.



### Adjustable settings

Time and Lux settings can be adjusted to control lighting switched directly from the main AlertCam unit.

## AlertCam Pro - AlertCam, AlertCam RA & AlertCam RS



External PIR camera with remote RF trigger and remote chime/alarm and wirefree trigger.

- Detect the intruder
- Trigger lighting up to 500w directly from AlertCam
- Initiate a video recording within the unit
- Send a wirefree trigger to remote chime/alarm device and 1500w switching device

|  |  |
|--|--|
| PIR detection range                      | 10m  |
| PIR detection angle                      | 160 Deg (adjustable)                                 |
| Camera viewing angle                     | 60 deg   |
| Camera resolution                        | 640 x 480  |
| Transmission Range                       | Up to 50m open field                                 |
| Max direct load                          | 500W ( 50W LED )                                     |
| Camera controls                          | Automatic white balance and exposure                 |
| Recording medium                         | SD ( FAT 16 ) or SDHC ( FAT 32 ) Max 32GB            |
| Record rate                              | 2 FPS for 20secs per trigger                         |
| Recording capacity with optional 32GB SD | 16,000 files of 40 images                            |
| Recording capacity with supplied 2GB SD  | 1,000 files of 40 images                             |
| Image format                             | JPEG (converts to video stream via bespoke software) |
| USB interface                            | Micro B type USB2                                    |
| RF Trigger range                         | Up to 50M - Clear line of sight                      |
| IP Rating                                | IP55 AlertCam, IP44 AlertCam RS                      |
| Dimensions                               | 108(D) x 73(W) x 138(H)mm                            |

### AlertCam - Combined external PIR camera with RF trigger



- Integral colour camera
- Built in digital video recorder
- Up to 750 20sec video clips or 60,000 still images
- Over writes oldest image when card full
- Time and date stamping of recordings
- RF trigger for remote alarm and switching devices
- IP55 rated

### AlertCam RS - Wire free remote switching unit



Wire free remote switching unit for use with AlertCam and GuardCam RF

- 1500w switching capability
- Up to 50m open field range
- IP44 rated
- Adjustable switched time
- Transmission range (up to 50m open field)

### AlertCam RA - Wire free remote alarm/chime receiver

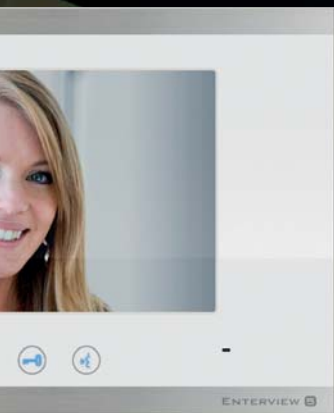


Wire free remote chime / alarm unit for use with AlertCam, GuardCam RF and GuardCam LED RF.

- Selectable chime or alarm
- Adjustable volume
- Adjustable activation time
- Transmission range (up to 50m open field)

# ACCESS CONTROL

A complete and flexible range of superb quality video door entry equipment. Simple installation and high performance in mono or colour - with the option of call points with integral PIN access - means you need look no further to find the ideal video door entry solution.









## EV5 Mono Video door entry system

- Clear high resolution mono picture on 4" monitor
- Up to 3 additional monitors per system
- Up to 2 additional audio handsets per system
- Up to 2 camera call points per system
- Door release activation button
- Two camera input
- Simple 4 core cable installation

### MONITOR

|                    |                            |
|--------------------|----------------------------|
| Power              | 14.5VDC Direct from PSU    |
| Installation       | Surface Mounted            |
| Operating Temp     | -10°C ~ +55°C (14°F~131°F) |
| Consumption        | 800mA / 14.5DC             |
| Dimensions Surface | 205(W) x 220(H) x 55(D)mm  |
| Net Weight         | 875g                       |

### CAMERA

|                    |                             |
|--------------------|-----------------------------|
| Image sensor       | 1/3" B/W CCD                |
| Min Illumination   | 0.8 LUX                     |
| Illumination       | White LED 4 pcs             |
| Lens               | LG/3.6mm                    |
| IRIS system        | Electronic automatic        |
| Viewing angle      | Horizontal 70° Vertical 50° |
| Voice transmission | Full duplex speech          |
| Power source       | DC 15V (+ 1V) from Monitor  |
| Assurance temp.    | -10°C ~ +50°C (14°F-122°F)  |
| Cabinet            | Vandal resistant metal      |
| Weight             | 296g                        |
| Dimensions Surface | 56(W) x 133(H) x 40(D)mm    |



## EV5KP - Mono Video door entry system with access control keypad

- Clear high resolution mono picture on 4" monitor
- Up to 3 additional monitors per system
- Up to 2 additional audio handsets per system
- Up to 2 camera call points per system
- Door release activation button
- Two camera input
- Simple 4 core cable installation

### MONITOR

|                    |                            |
|--------------------|----------------------------|
| Power              | 14.5VDC Direct from PSU    |
| Installation       | Surface Mounted            |
| Operating Temp     | -10°C ~ +55°C (14°F~131°F) |
| Consumption        | 800mA / 14.5DC             |
| Dimensions Surface | 205(W) x 220(H) x 55(D)mm  |
| Net Weight         | 875g                       |

### CAMERA

|                    |                             |
|--------------------|-----------------------------|
| Image sensor       | 1/3" B/W CCD                |
| Min Illumination   | 0.8 LUX                     |
| Illumination       | LED                         |
| Lens               | LG/3.6mm                    |
| IRIS system        | Electronic automatic        |
| Camera Angle       | Adjustable                  |
| Viewing angle      | Horizontal 70° Vertical 50° |
| Voice transmission | Full duplex speech          |
| Power source       | DC 15V (+ 1V) from Monitor  |
| Assurance temp.    | -10°C ~ +50°C (14°F~122°F)  |
| Cabinet            | Metal                       |
| Weight             | 686g                        |
| Dimensions Surface | 74(W) x 182(H) x 59(D)mm    |





## EV5C Colour Video door entry system

- Clear high resolution colour picture on 4" monitor
- Up to 3 additional monitors per system
- Up to 2 additional audio handsets per system
- Up to 2 camera call points per system
- Door release button
- Two camera input
- Simple 4 core cable installation

### MONITOR

|                    |                            |
|--------------------|----------------------------|
| Power              | 14.5VDC Direct from PSU    |
| Installation       | Surface Mounted            |
| Operating Temp     | -10°C ~ +55°C (14°F~131°F) |
| Consumption        | 800mA / 14.5DC             |
| Dimensions Surface | 205(w) x 220(H) x 55(D)mm  |
| Net Weight         | 875g                       |

### CAMERA

|                    |                             |
|--------------------|-----------------------------|
| Image sensor       | 1/3" Colour CCD             |
| Min Illumination   | 1 LUX                       |
| Illumination       | White LED 4 pcs             |
| Lens               | LG/3.6mm                    |
| IRIS system        | Electronic automatic        |
| Viewing angle      | Horizontal 70° Vertical 50° |
| Voice transmission | Full duplex speech          |
| Power source       | DC 15V (+ 1V) from Monitor  |
| Assurance temp.    | -10°C ~ +50°C (14°F~122°F)  |
| Cabinet            | Vandal resistant metal      |
| Weight             | 296g                        |
| Dimensions Surface | 56(w) x 133(H) x 40(D)mm    |



## EV5CKP - Colour Video door entry system with access control keypad

- Clear high resolution colour picture on 4" monitor
- Up to 3 additional monitors per system
- Up to 2 additional audio handsets per system
- Up to 2 camera call points per system
- Door release activation button
- Two camera input
- Simple 4 core cable installation

### MONITOR

|                    |                            |
|--------------------|----------------------------|
| Power              | 14.5VDC Direct from PSU    |
| Installation       | Surface Mounted            |
| Operating Temp     | -10°C ~ +55°C (14°F~131°F) |
| Consumption        | 800mA / 14.5DC             |
| Dimensions Surface | 205(w) x 220(H) x 55(D)mm  |
| Net Weight         | 875g                       |

### CAMERA

|                    |                             |
|--------------------|-----------------------------|
| Image sensor       | 1/3" Colour CCD             |
| Min Illumination   | 1 LUX                       |
| Illumination       | LED                         |
| Lens               | LG/3.6mm                    |
| IRIS system        | Electronic automatic        |
| Camera Angle       | Adjustable                  |
| Viewing angle      | Horizontal 70° Vertical 50° |
| Voice transmission | Full duplex speech          |
| Power source       | DC 15V (+ 1V) from Monitor  |
| Assurance temp.    | -10°C ~ +50°C (14°F~122°F)  |
| Cabinet            | Metal                       |
| Weight             | 686g                        |
| Dimensions Surface | 74(w) x 182(H) x 59(D)mm    |

## EV5C-HF Colour Video door entry system



- Clear high resolution colour picture on 7" hands free TFT monitor
- Up to three additional monitors per system
- Up to two additional audio only handsets
- Door release button
- Two camera input
- Simple 4 core cable installation

### MONITOR

|                    |                            |
|--------------------|----------------------------|
| Power              | 14.5VDC Direct from PSU    |
| Installation       | Surface Mounted            |
| Operating Temp     | -10°C ~ +55°C (14°F~131°F) |
| Consumption        | 800mA / 14.5DC             |
| Dimensions Surface | 240(W) x 175(H) x 38(D)mm  |
| Net Weight         | 594g                       |

### CAMERA

|                    |                             |
|--------------------|-----------------------------|
| Image sensor       | 1/3" Colour CCD             |
| Min Illumination   | 1 LUX                       |
| Illumination       | White LED 4 pcs             |
| Lens               | LG/3.6mm                    |
| IRIS system        | Electronic automatic        |
| Viewing angle      | Horizontal 70° Vertical 50° |
| Voice transmission | Full duplex speech          |
| Power source       | DC 15V (+ 1V) from Monitor  |
| Assurance temp.    | -10°C ~ +50°C (14°F~122°F)  |
| Cabinet            | Vandal resistant metal      |
| Weight             | 296g                        |
| Dimensions Surface | 56(W) x 133(H) x 40(D)mm    |

## EV5CKP-HF Colour Video door entry system



- Clear high resolution colour picture on 7" hands free TFT monitor
- Up to three additional monitors per system
- Up to two additional audio only handsets per system
- Door release button
- Two camera input
- Simple 4 core cable installation

### MONITOR

|                    |                            |
|--------------------|----------------------------|
| Power              | 14.5VDC Direct from PSU    |
| Installation       | Surface Mounted            |
| Operating Temp     | -10°C ~ +55°C (14°F~131°F) |
| Consumption        | 800mA / 14.5DC             |
| Dimensions Surface | 240(W) x 175(H) x 38(D)mm  |
| Net Weight         | 594g                       |

### CAMERA

|                    |                             |
|--------------------|-----------------------------|
| Image sensor       | 1/3" Colour CCD             |
| Min Illumination   | 1 LUX                       |
| Illumination       | LED                         |
| Lens               | LG/3.6mm                    |
| IRIS system        | Electronic automatic        |
| Camera Angle       | Adjustable                  |
| Viewing angle      | Horizontal 70° Vertical 50° |
| Voice transmission | Full duplex speech          |
| Power source       | DC 15V (+ 1V) from Monitor  |
| Assurance temp.    | -10°C ~ +50°C (14°F~122°F)  |
| Cabinet            | Metal                       |
| Weight             | 686g                        |
| Dimensions Surface | 74(W) x 182(H) x 59(D)mm    |

# EV5 ADDITIONAL MONITORS

## EVH5C - Colour handset



■ Monochrome version available - EVH5

|                    |                            |
|--------------------|----------------------------|
| Power              | 14.5VDC Direct from PSU    |
| Installation       | Surface Mounted            |
| Operating Temp     | -10°C ~ +55°C (14°F~131°F) |
| Consumption        | 800mA / 14.5DC             |
| Dimensions Surface | 205(W) x 220(H) x 55(D)mm  |
| Net Weight         | 875g                       |

## EVH5C-HF - Colour handsfree monitor



|                    |                            |
|--------------------|----------------------------|
| Power              | 14.5VDC Direct from PSU    |
| Installation       | Surface Mounted            |
| Operating Temp     | -10°C ~ +55°C (14°F~131°F) |
| Consumption        | 800mA / 14.5DC             |
| Dimensions Surface | 240(W) x 175(H) x 38(D)mm  |
| Net Weight         | 594g                       |

## EVHF10W - Colour handsfree 10" monitor



■ Black version available - EVHF10B



|                    |                            |
|--------------------|----------------------------|
| Power              | 14.5VDC Direct from PSU    |
| Working current    | 450mA                      |
| Speaker output     | 8Ω 0.5W                    |
| Installation       | Surface Mounted            |
| Operating Temp     | -10°C ~ +55°C (14°F~131°F) |
| Dimensions Surface | 340(W) x 210(H) x 35(D)mm  |
| Net Weight         | 594g                       |

## EVH5A0 - Audio only handset



|                    |                            |
|--------------------|----------------------------|
| Power              | 14.5VDC Direct from PSU    |
| Installation       | Surface Mounted            |
| Operating Temp     | -10°C ~ +55°C (14°F~131°F) |
| Consumption        | 100mA / 14.5DC             |
| Dimensions Surface | 95(W) x 200(H) x 45(D)mm   |
| Net Weight         | 220g                       |

# EV5 ADDITIONAL CAMERAS

## EV5CAM - Monochrome camera



|                    |                             |
|--------------------|-----------------------------|
| Image sensor       | 1/3" B/W CCD                |
| Min Illumination   | 0.8 LUX                     |
| Illumination       | White LED 4 pcs             |
| Lens               | LG/3.6mm                    |
| IRIS system        | Electronic automatic        |
| Viewing angle      | Horizontal 70° Vertical 50° |
| Voice transmission | Full duplex speech          |
| Power source       | DC 15V (+ 1V) from Monitor  |
| Assurance temp.    | -10°C ~ +50°C (14°F~122°F)  |
| Cabinet            | Vandal resistant metal      |
| Weight             | 296g                        |
| Dimensions Surface | 56(W) x 133(H) x 40(D)mm    |

## EV5KPCAM - Monochrome camera with access control keypad



|                    |                             |
|--------------------|-----------------------------|
| Image sensor       | 1/3" B/W CCD                |
| Min Illumination   | 0.8 LUX                     |
| Illumination       | LED                         |
| Lens               | LG/3.6mm                    |
| IRIS system        | Electronic automatic        |
| Camera Angle       | Adjustable                  |
| Viewing angle      | Horizontal 70° Vertical 50° |
| Voice transmission | Full duplex speech          |
| Power source       | DC 15V (+ 1V) from Monitor  |
| Assurance temp.    | -10°C ~ +50°C (14°F~122°F)  |
| Cabinet            | Metal                       |
| Weight             | 686g                        |
| Dimensions Surface | 74(W) x 182(H) x 59(D)mm    |

## EV5CCAM - Colour camera



|                    |                             |
|--------------------|-----------------------------|
| Image sensor       | 1/3" Colour CCD             |
| Min Illumination   | 1 LUX                       |
| Illumination       | White LED 4 pcs             |
| Lens               | LG/3.6mm                    |
| IRIS system        | Electronic automatic        |
| Viewing angle      | Horizontal 70° Vertical 50° |
| Voice transmission | Full duplex speech          |
| Power source       | DC 15V (+ 1V) from Monitor  |
| Assurance temp.    | -10°C ~ +50°C (14°F~122°F)  |
| Cabinet            | Vandal resistant metal      |
| Weight             | 296g                        |
| Dimensions Surface | 56(W) x 133(H) x 40(D)mm    |

## EV5CKPCAM - Colour camera with access control keypad



|                    |                             |
|--------------------|-----------------------------|
| Image sensor       | 1/3" Colour CCD             |
| Min Illumination   | 1 LUX                       |
| Illumination       | LED                         |
| Lens               | LG/3.6mm                    |
| IRIS system        | Electronic automatic        |
| Camera Angle       | Adjustable                  |
| Viewing angle      | Horizontal 70° Vertical 50° |
| Voice transmission | Full duplex speech          |
| Power source       | DC 15V (+ 1V) from Monitor  |
| Assurance temp.    | -10°C ~ +50°C (14°F~122°F)  |
| Cabinet            | Metal                       |
| Weight             | 686g                        |
| Dimensions Surface | 74(W) x 182(H) x 59(D)mm    |

## EVOKE Audio door entry system



- Easy install
- Up to two handsets per system
- Clear high quality speech
- Durable metal call point IP55 rated
- Call transfer between handsets
- Remote door release

### HANDSET

|                 |               |
|-----------------|---------------|
| Input range     | DC12V         |
| Output power    | <=0.6W        |
| Working current | <=50mA        |
| Dimension       | 225 x 83 x 60 |

### CALL POINT

|                 |               |
|-----------------|---------------|
| Input range     | DC12V         |
| Output power    | <=0.6W        |
| Working current | <=50mA        |
| IP rating       | 55            |
| Dimension       | 128 x 43 x 40 |

## EVOKE-H Additional handset



|                 |               |
|-----------------|---------------|
| Input range     | DC12V         |
| Output power    | <=0.6W        |
| Working current | <=50mA        |
| Dimension       | 225 x 83 x 60 |

## EVOKEKP - Audio door entry system with keypad



- Durable metal call point IP55 rated
- Blue backlit keypad
- Up to 40 PIN code groups
- Simple programming
- Up to two handsets per system
- Clear high quality speech
- Call transfer between handsets
- Remote door release

### HANDSET

|                 |               |
|-----------------|---------------|
| Input range     | DC12V         |
| Output power    | <=0.6W        |
| Working current | <=50mA        |
| Dimension       | 225 x 83 x 60 |

### KEYPAD

|                 |               |
|-----------------|---------------|
| Input range     | DC12V         |
| Output power    | <=1.56W       |
| Working current | <=130mA       |
| Speaker output  | 0.5W          |
| IP rating       | 55            |
| Dimension       | 190 x 78 x 60 |



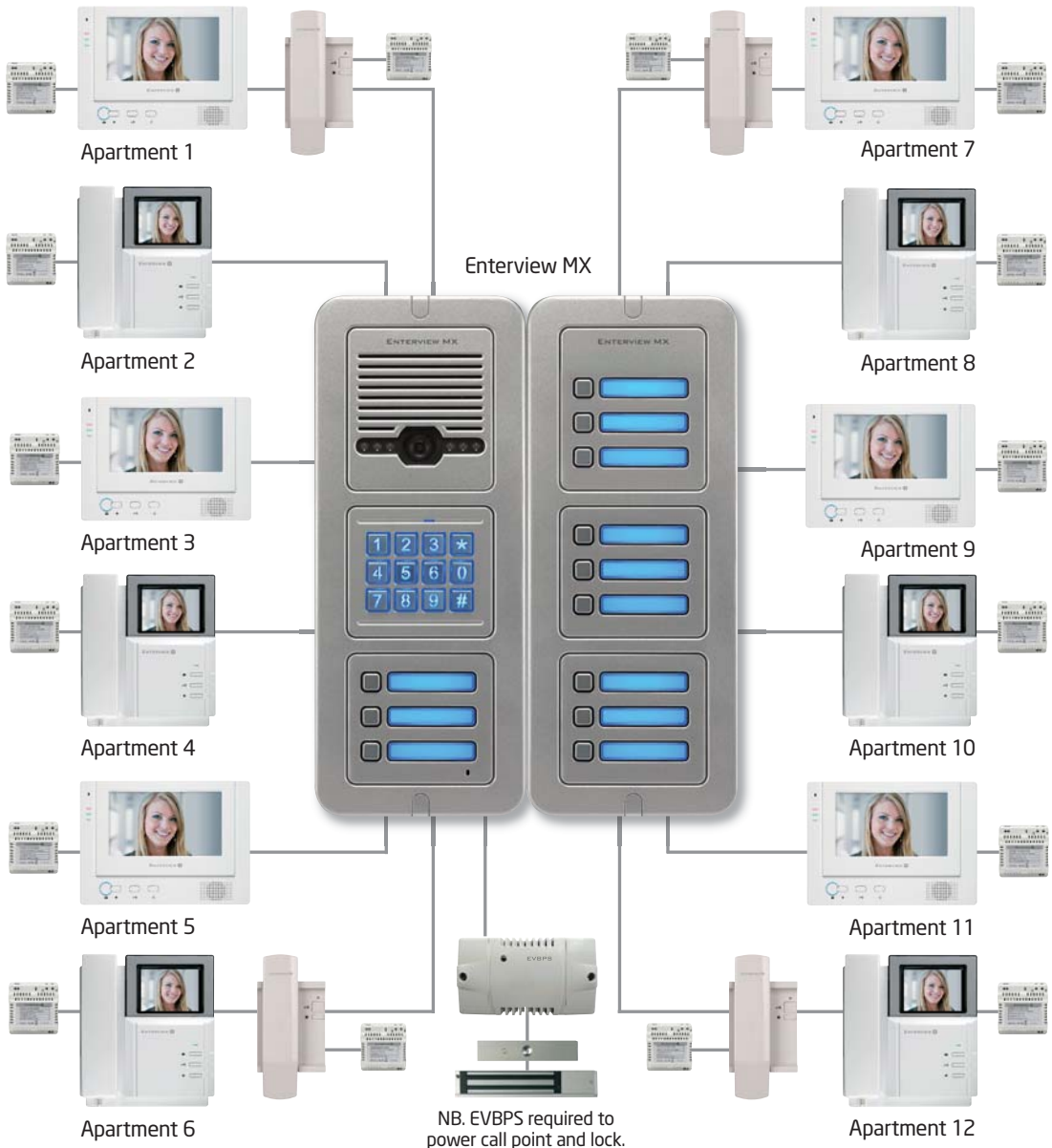
# ENTERVIEW MX

Enterview MX multiway video door entry systems are the ideal solution for multi apartment applications from 2 - 32 way. Enterview MX is available in mono or colour formats with the option to choose integral keypad access control. The stylish slimline call station is suitable for external use and can be flush or surface mounted. Simply tell us how many handset points are required and we'll quote for the complete system including all required power supplies.



Enterview MX systems are offered in colour or mono variants. A choice of handset or stylish handsfree monitors are available for the colour system, even in a mix and match format. In addition both mono and colour systems can accept the handy audio only handset.

## Example of an Enterview MX 12 way video door entry call system with keypad



## Enterview MX - Multi way mono & colour video door entry systems

- Stylish aluminium design
- 2-way to 32-way
- Label ID template available
- Surface or flush mounting of call station
- Access control keypad option
- Blue backlight illumination
- Up to 4 handsets per apartment

|                    |  |
|--------------------|--|
| Working condition  | Temperature: -20°C ~ +55°C<br>RH ≤ 95% |
| Voltage DC         | 15V ±10%                               |
| Standby current    | ≤ 80 mA                                |
| Working current    | ≤240 mA                                |
| Communication mode | Dual transmission                      |
| Talking time       | 2 minutes                              |
| IP rating          | 55                                     |
| Weight             | 1.05kg                                 |
| Dimensions surface | 124 (W) x 304 (H) x 38mm (D)           |
| Dimensions flush   | 124 (W) x 304 (H) x 340mm (D)          |



EVMX2 -  
Monochrome 2 button video door station  
EVMX2C -  
Colour 2 button video door station



EVMX4 -  
Monochrome 4 button video door station  
EVMX4C -  
Colour 4 button video door station



EVMX6 -  
Monochrome 6 button video door  
EVMX6C -  
Colour 6 button video door station

# ENTerview MX MONITORS

## EVH5C - Colour handset



■ Monochrome version available - EVH5

|                    |                            |
|--------------------|----------------------------|
| Power              | 14.5VDC Direct from PSU    |
| Installation       | Surface Mounted            |
| Operating Temp     | -10°C ~ +55°C (14°F~131°F) |
| Consumption        | 800mA / 14.5DC             |
| Dimensions Surface | 205(W) x 220(H) x 55(D)mm  |
| Net Weight         | 875g                       |

## EVH5C-HF - Colour handsfree monitor



|                    |                            |
|--------------------|----------------------------|
| Power              | 14.5VDC Direct from PSU    |
| Installation       | Surface Mounted            |
| Operating Temp     | -10°C ~ +55°C (14°F~131°F) |
| Consumption        | 800mA / 14.5DC             |
| Dimensions Surface | 240(W) x 175(H) x 38(D)mm  |
| Net Weight         | 594g                       |

## EVHF10W - Colour handsfree 10" monitor



■ Black version available - EVHF10B

|                    |                            |
|--------------------|----------------------------|
| Power              | 14.5VDC Direct from PSU    |
| Working current    | 450mA                      |
| Speaker output     | 8Ω 0.5W                    |
| Installation       | Surface Mounted            |
| Operating Temp     | -10°C ~ +55°C (14°F~131°F) |
| Dimensions Surface | 340(W) x 210(H) x 35(D)mm  |
| Net Weight         | 594g                       |

## EVH5A0 - Audio only handset



|                    |                            |
|--------------------|----------------------------|
| Power              | 14.5VDC Direct from PSU    |
| Installation       | Surface Mounted            |
| Operating Temp     | -10°C ~ +55°C (14°F~131°F) |
| Consumption        | 100mA / 14.5DC             |
| Dimensions Surface | 95(W) x 200(H) x 45(D)mm   |
| Net Weight         | 220g                       |



## EVVX - Stainless steel vandal resistant colour video door entry

Enterview VX is available in 1-4 way variants featuring a contemporary design with blue backlighting and a tough stainless steel faceplate. The range also includes a 1 or 2 way code access unit. All models have surface or flush mounting options.

- Contemporary stainless steel design
- Vandal resistant
- 1 button to 4 button
- Label ID template available
- Surface or flush mounting variants
- Blue backlight illumination

|                    |                              |
|--------------------|------------------------------|
| Input range        | DC 12~15V                    |
| Working current    | 250mA                        |
| Speaker output     | 8Ω 0.5W                      |
| Weather proof      | IP 65                        |
| Dimensions surface | 144 (W) x 274 (H) x 48mm (D) |
| Dimensions flush   | 140 (W) x 270 (H) x 50mm (D) |

- EVVX1F** 1 button flush mount video door station
- EVVX2F** 2 button flush mount video door station
- EVVX3F** 3 button flush mount video door station
- EVVX4F** 4 button flush mount video door station



- EVVX1S** 1 button surface mount video door station
- EVVX2S** 2 button surface mount video door station
- EVVX3S** 3 button surface mount video door station
- EVVX4S** 4 button surface mount video door station

- EVVX1KPF** 1 button flush mount video door station with keypad
- EVVX2KPF** 2 button flush mount video door station with keypad
- EVVX1KPS** 1 button surface mount video door station with keypad
- EVVX2KPS** 2 button surface mount video door station with keypad



# ENTERVIEW VX MONITORS

## EVH5C - Colour handset



■ Monochrome version available - EVH5

|                    |                            |
|--------------------|----------------------------|
| Power              | 14.5VDC Direct from PSU    |
| Installation       | Surface Mounted            |
| Operating Temp     | -10°C ~ +55°C (14°F~131°F) |
| Consumption        | 800mA / 14.5DC             |
| Dimensions Surface | 205(W) x 220(H) x 55(D)mm  |
| Net Weight         | 875g                       |

## EVH5C-HF - Colour handsfree monitor



|                    |                            |
|--------------------|----------------------------|
| Power              | 14.5VDC Direct from PSU    |
| Installation       | Surface Mounted            |
| Operating Temp     | -10°C ~ +55°C (14°F~131°F) |
| Consumption        | 800mA / 14.5DC             |
| Dimensions Surface | 240(W) x 175(H) x 38(D)mm  |
| Net Weight         | 594g                       |

## EVHF10W - Colour handsfree 10" monitor



■ Black version available - EVHF10B

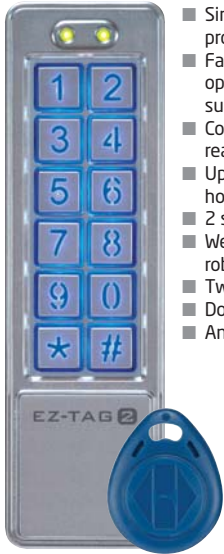
|                    |                            |
|--------------------|----------------------------|
| Power              | 14.5VDC Direct from PSU    |
| Working current    | 450mA                      |
| Speaker output     | 8Ω 0.5W                    |
| Installation       | Surface Mounted            |
| Operating Temp     | -10°C ~ +55°C (14°F~131°F) |
| Dimensions Surface | 340(W) x 210(H) x 35(D)mm  |
| Net Weight         | 594g                       |

## EVH5A0 - Audio only handset



|                    |                            |
|--------------------|----------------------------|
| Power              | 14.5VDC Direct from PSU    |
| Installation       | Surface Mounted            |
| Operating Temp     | -10°C ~ +55°C (14°F~131°F) |
| Consumption        | 100mA / 14.5DC             |
| Dimensions Surface | 95(W) x 200(H) x 45(D)mm   |
| Net Weight         | 220g                       |

## EZ-TAG2 - Single door proximity door entry



- Easy install
- Complete with 10 Tags
- Simple self contained programming
- Fail safe or secure options from power supply
- Combined keypad, reader and controller
- Up to 1,010 key tag holders or Pin numbers
- 2 separate user groups
- Weather/dust proof robust construction
- Twin relay outputs
- Door bell function
- Anti tamper option

## EZ-TAG2 PRO - Single door proximity door entry kit



- Kit contains
- EZ-TAG2 Door Entry with 10 Tags
  - EVML-250 Electromagnetic Lock
  - EVBPS Boxed power supply
  - EV-EXIT Push to Exit Lock
  - EV-EBG Emergency Break Glass

|                                  |                     |
|----------------------------------|---------------------|
| DC input                         | 12 - 24 volts       |
| AC input                         | 12 - 24 volts       |
| Standby current                  | 80ma                |
| Operating current (without lock) | 110ma @ 12 volts DC |
| Working temperature              | -20c to +50c        |
| Reader frequency                 | 125Hz               |
| Tag reading distance             | 5cm                 |
| IP rating                        | 65                  |
| EZ-TAG2 Dimensions               | 152 x 45 x 25mm     |



## EZ-LOCK - Single door keypad access control



- Easy install
- Simple self contained programming
- Fail safe or secure options from power supply
- Combined keypad and controller
- 2 separate user groups
- Weather/dust proof robust construction
- Twin relay outputs
- Door bell function
- Anti tamper option

## EZ-LOCK PRO - Single door keypad access control kit



- Kit contains
- EZ-LOCK Keypad Access Door Entry
  - EVML-250 Electromagnetic Lock
  - EVBPS Boxed power supply
  - EV-EXIT Push to Exit Lock
  - EV-EBG Emergency Break Glass

|                                  |                     |
|----------------------------------|---------------------|
| DC input                         | 12 - 24 volts       |
| AC input                         | 12 - 24 volts       |
| Standby current                  | 80ma                |
| Operating current (without lock) | 110ma @ 12 volts DC |
| Working temperature              | -20c to +50c        |
| IP rating                        | 65                  |
| Dimension                        | 152 x 45 x 25mm     |



# ACCESS CONTROL ACCESSORIES

## EVBPS Boxed power supply



- 100-240vAC, 50/60Hz input
- 1.5A / 12vDC fail safe output
- 1A 12vDC fail secure output
- Size: 129 x 73 x 50mm LWD

## ENTERD-YLR - Surface Electromagnetic lock



- Holding force 295kg/650lbs
  - 160ma 12vdc input
  - For use with Yale type surface locks
  - Flush mounting version available
- NB. Requires EV-BPS power supply

## ENTERD Electromagnetic lock



- Holding force 295kg/650lbs
  - 160ma 12vdc input
  - For use with Yale type rim locks
  - Surface mounting version available
- NB. Requires EV-BPS power supply

## EV-ML-250 Electromagnetic lock



- Holding force 250kg/550lbs max
  - 420ma 12vdc input
  - Z & L mounting bracket included
- NB. Requires EV-BPS power supply

## EV-EXIT - Push to exit lock release button



- Stainless steel fascia
- Flush mounting
- Push to make contacts

## EV-EBG - Emergency break glass



- Surface mounted
- Emergency break glass to release door

## EZT2-ST10 Proximity Tags



Proximity Tags (Packs of 10)  
for use with EZ-TAG2

The Fireline system from ESP has been created to balance performance, reliability and aesthetics whilst maintaining full compliance with the latest standards. The range includes everything required to complete a high quality, durable, conventional fire alarm installation.







# FIRE ALARM PANELS



## MAG2 2 Zone Fire Panel

- 2 programmable zones
- Active end of line monitoring and head removal
- 30 fire detectors per zone
- Unlimited number of call points per zone
- Integral evacuate alarm button
- 'Class change' facility
- Enable/disable security key
- One man walk test facility
- Volt free fire change over relay
- Volt free fault change over relay
- Individual sounder circuit fault ID
- Individual zone/sounder isolate
- BS5839 and EN54 P2/4 compliant
- CE certified
- Requires only 1x12v battery
- ABS casing

|                                  |                                |                             |
|----------------------------------|--------------------------------|-----------------------------|
| <b>INPUTS</b>                    | Max detectors per zone         | 30                          |
|                                  | Thresholds for zone conditions | 0 - 2 mA (Fault condition)  |
|                                  |                                | 2 - 6 mA (Normal condition) |
|                                  |                                | 6 - 110 mA (Fire condition) |
| 110 mA - Short (Fault condition) |                                |                             |
| <b>POWER</b>                     | Mains fail consumption         | 50mA                        |
|                                  | Mains supply                   | 230 VAC ± 10%               |
|                                  | Standby supply                 | 1 x 7ah 12V S.L.A. Battery  |
|                                  | Power availability             | 0.7 amps                    |

|                    |                     |                                  |
|--------------------|---------------------|----------------------------------|
| <b>OUTPUTS</b>     | Sounder 1           | 24V (max 300mA fused)            |
|                    | Sounder 2           | 24V (max 300mA fused)            |
|                    | Fault/fire relay    | Volt free 500mA @ 24V (max load) |
|                    | Auxiliary output    | 24VDC (300mA fused)              |
| <b>ENVIRONMENT</b> | Working Temperature | 0 to 40 OC                       |
|                    | Storage Temperature | -20 to 60 OC                     |
|                    | Humidity            | 0 - 95%                          |
|                    | Dimensions (mm)     | 340W 290H 100D                   |
|                    | Weight              | 2.1 KG                           |



## MAG2 2 Zone Fire Panel

- 2 programmable zones
- Active end of line monitoring and head removal
- 30 fire detectors per zone
- Unlimited number of call points per zone
- Integral evacuate alarm button
- 'Class change' facility
- Enable/disable security key
- One man walk test facility
- Volt free fire change over relay
- Volt free fault change over relay
- Individual sounder circuit fault ID
- Individual zone/sounder isolate
- BS5839 and EN54 P2/4 compliant
- CE certified
- Requires only 1x12v battery
- Metal casing

|                                  |                                |                             |
|----------------------------------|--------------------------------|-----------------------------|
| <b>INPUTS</b>                    | Max detectors per zone         | 30                          |
|                                  | Thresholds for zone conditions | 0 - 2 mA (Fault condition)  |
|                                  |                                | 2 - 6 mA (Normal condition) |
|                                  |                                | 6 - 110 mA (Fire condition) |
| 110 mA - Short (Fault condition) |                                |                             |
| <b>POWER</b>                     | Mains fail consumption         | 50mA                        |
|                                  | Mains supply                   | 230 VAC ± 10%               |
|                                  | Standby supply                 | 1 x 7ah 12V S.L.A. Battery  |
|                                  | Power availability             | 0.7 amps                    |

|                    |                     |                                  |
|--------------------|---------------------|----------------------------------|
| <b>OUTPUTS</b>     | Sounder 1           | 24V (max 300mA fused)            |
|                    | Sounder 2           | 24V (max 300mA fused)            |
|                    | Fault/fire relay    | Volt free 500mA @ 24V (max load) |
|                    | Auxiliary output    | 24VDC (300mA fused)              |
| <b>ENVIRONMENT</b> | Working Temperature | 0 to 40 OC                       |
|                    | Storage Temperature | -20 to 60 OC                     |
|                    | Humidity            | 0 - 95%                          |
|                    | Dimensions (mm)     | 200W 290H 80D                    |
|                    | Weight              | 2.7 KG                           |



## MAG4P 4 Zone Fire Panel

- 4 programmable zones
- Active end of line monitoring and head removal
- 30 fire detectors per zone
- Unlimited number of call points per zone
- Integral evacuate alarm button
- 'Class change' facility
- Enable/disable security key
- One man walk test facility
- Volt free fire change over relay
- Volt free fault change over relay
- Individual sounder circuit fault ID
- Individual zone/sounder isolate
- BS5839 and EN54 P2/4 compliant
- CE certified
- Requires only 1x12v battery
- ABS casing

|               |                                  |                             |
|---------------|----------------------------------|-----------------------------|
| <b>INPUTS</b> | Max detectors per zone           | 30                          |
|               | Thresholds for zone conditions   | 0 - 2 mA (Fault condition)  |
|               |                                  | 2 - 6 mA (Normal condition) |
|               |                                  | 6 - 110 mA (Fire condition) |
|               | 110 mA - Short (Fault condition) |                             |
| <b>POWER</b>  | Mains fail consumption           | 50mA                        |
|               | Mains supply                     | 230 VAC ± 10%               |
|               | Standby supply                   | 1 x 7ah 12V S.L.A. Battery  |
|               | Power availability               | 0.7 amps                    |

|                    |                     |                                  |
|--------------------|---------------------|----------------------------------|
| <b>OUTPUTS</b>     | Sounder 1           | 24V (max 300mA fused)            |
|                    | Sounder 2           | 24V (max 300mA fused)            |
|                    | Fault/fire relay    | Volt free 500mA @ 24V (max load) |
|                    | Auxiliary output    | 24VDC (300mA fused)              |
| <b>ENVIRONMENT</b> | Working Temperature | 0 to 40 OC                       |
|                    | Storage Temperature | -20 to 60 OC                     |
|                    | Humidity            | 0 - 95%                          |
|                    | Dimensions (mm)     | 340W 290H 100D                   |
|                    | Weight              | 2.5 KG                           |



## MAG4 4 Zone Fire Panel

- 4 programmable zones
- Active end of line monitoring and head removal
- 30 fire detectors per zone
- Unlimited number of call points per zone
- Integral evacuate alarm button
- 'Class change' facility
- Enable/disable security key
- One man walk test facility
- Volt free fire change over relay
- Volt free fault change over relay
- Individual sounder circuit fault ID
- Individual zone/sounder isolate
- BS5839 and EN54 P2/4 compliant
- CE certified
- Requires only 1x12v battery
- Metal casing

|               |                                  |                             |
|---------------|----------------------------------|-----------------------------|
| <b>INPUTS</b> | Max detectors per zone           | 30                          |
|               | Thresholds for zone conditions   | 0 - 2 mA (Fault condition)  |
|               |                                  | 2 - 6 mA (Normal condition) |
|               |                                  | 6 - 110 mA (Fire condition) |
|               | 110 mA - Short (Fault condition) |                             |
| <b>POWER</b>  | Mains fail consumption           | 50mA                        |
|               | Mains supply                     | 230 VAC ± 10%               |
|               | Standby supply                   | 1 x 7ah 12V S.L.A. Battery  |
|               | Power availability               | 0.7 amps                    |

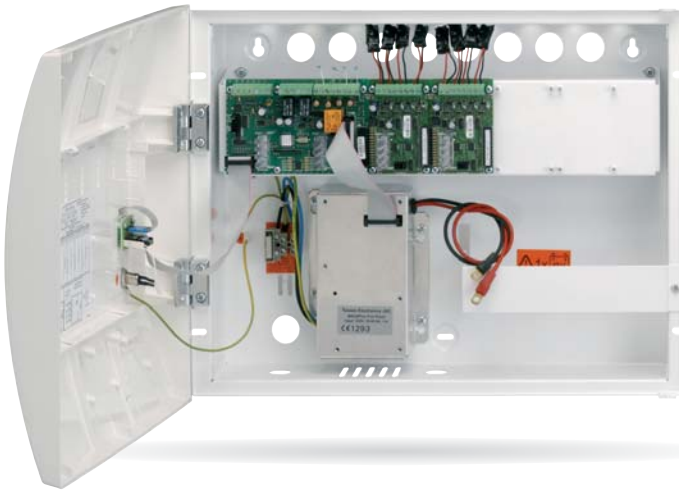
|                    |                     |                                  |
|--------------------|---------------------|----------------------------------|
| <b>OUTPUTS</b>     | Sounder 1           | 24V (max 300mA fused)            |
|                    | Sounder 2           | 24V (max 300mA fused)            |
|                    | Fault/fire relay    | Volt free 500mA @ 24V (max load) |
|                    | Auxiliary output    | 24VDC (300mA fused)              |
| <b>ENVIRONMENT</b> | Working Temperature | 0 to 40 OC                       |
|                    | Storage Temperature | -20 to 60 OC                     |
|                    | Humidity            | 0 - 95%                          |
|                    | Dimensions (mm)     | 320W 220H 80D                    |
|                    | Weight              | 3.5 KG                           |

# FIRE ALARM PANELS

## MAG816 - 8 Zone Fire Panel expandable to 16 zones



- Up to 16 programmable zones
- Up to 16 sounder circuits
- Active end of line monitoring and head removal
- Up to 32 fire detectors per zone
- Unlimited number of call points per zone
- Integral evacuate alarm button
- Repeater facility
- 'Class change' facility
- Enable/disable security key
- One man walk test facility
- Volt free fire change over relay
- Volt free fault change over relay
- Individual sounder circuit fault ID
- Individual zone/sounder isolate
- Alarm delay options
- BS5839 and EN54 P2/4 compliant
- CE certified
- Requires 1 x 12V batteries
- ABS casing



### FIRE ZONE / SOUNDER OUTPUT MATRIX

| Number of zone cards fitted | Number of sounder cards fitted | Number of zones | Number of sounder outputs |
|-----------------------------|--------------------------------|-----------------|---------------------------|
| 2                           | 0                              | 8               | 4                         |
| 3                           | 0                              | 12              | 4                         |
| 4                           | 0                              | 16              | 4                         |
| 2                           | 1                              | 8               | 8                         |
| 3                           | 1                              | 12              | 8                         |
| 1                           | 2                              | 4               | 12                        |
| 2                           | 2                              | 8               | 12                        |
| 1                           | 3                              | 4               | 16                        |

NB The MAG816 features 4 sounder circuits. Space is provided for up to 4 extra expansion cards of any combination. Sounder cards carry 4 sounder circuits, Zone cards carry 4 fire zones. The MAG816 is supplied as standard with 8 fire zones and 4 sounder circuits.

| INPUTS | Max. detectors per zone        | 32  |
|--------|--------------------------------|---|
| INPUTS | Thresholds for zone conditions | 0 - 2 mA (Fault condition)<br>2 - 10 mA (Normal condition)<br>10 - 110 mA (Fire condition)<br>110mA - + Short (Fault condition) |
|        | Mains fail consumption         | 130mA (1 zone expander)<br>260mA (4 zone expanders)   |
|        | Mains supply                   | 230 VAC ± 10%   |
|        | Standby supply                 | 1 x 18ah 12V S.L.A. Batteries   |
| POWER  | Power availability             | 0.7 amps  |

| OUTPUTS     | On board sounder circuits (4) | 300mA @ 24V fuse resettable (PTC) |
|-------------|-------------------------------|-----------------------------------|
| OUTPUTS     | Sounder expander cards (4)    | 150mA @ 24V fuse resettable (PTC) |
| OUTPUTS     | Fault/fire relay              | Volt free 500mA @ 24V (max load)  |
| OUTPUTS     | Auxiliary output              | 24VDC (300mA fused)               |
| ENVIRONMENT | Working Temperature           | 0 to 40 OC                        |
|             | Storage Temperature           | -20 to 60 OC                      |
|             | Humidity                      | 0 to 93%                          |
|             | Dimensions (mm)               | 456W 350H 125D                    |
| ENVIRONMENT | Weight                        | 4.2 KG                            |

# FIRE ALARM DETECTORS

## Conventional Fire Alarm Detectors



These Fireline detectors have been developed to provide a perfect compliment to the Fireline MAG panels. All detectors are supplied with a diode base.

- PSD-2** Optical smoke detector
- CSD-2** Combined optical smoke & fixed heat detector
- FHD-2** Fixed temperature heat detector
- RHD-2** Rate of rise heat detector

| MODEL                 | PSD-2              | CSD-2                 | FHD-2              | RHD-2              |
|-----------------------|--------------------|-----------------------|--------------------|--------------------|
| DESCRIPTION           | Optical smoke      | Combined smoke/heat   | Fixed temp heat    | Rate of rise heat  |
| TYPE                  | Conventional       | Conventional          | Conventional       | Conventional       |
| APPROVAL              | EN54-7             | EN54-7, EN54-5        | EN54-5             | EN54-5             |
| CLASS                 | N/A                | A1R                   | A2S                | A1R                |
| OPERATING VOLTAGE     | 9 - 30VDC          | 9 - 30VDC             | 9 - 30VDC          | 9 - 30VDC          |
| STANDBY CURRENT @ 24V | < 60µA             | < 60µA                | < 60µA             | < 60µA             |
| ALARM CURRENT @ 24V   | 49mA               | 49mA                  | 49mA               | 49mA               |
| WIRE GAUGE            | 0.4mm - 2.0mm TWIN | 0.4mm - 2.0mm TWIN    | 0.4mm - 2.0mm TWIN | 0.4mm - 2.0mm TWIN |
| OPERATING TEMPERATURE | -10°C to 60°C      | -10°C to 60°C         | -10°C to 60°C      | -10°C to 60°C      |
| TEST FACILITY         | Simulated Smoke    | Simulated Smoke/ Heat | Heat Source        | Heat Source        |

## 12V Fire Alarm Detectors



The new range of Fireline detectors have been developed to provide a perfect compliment to 12V hardwire intruder alarm systems. All detectors are supplied with a relay base.

- PSD-212** 12V Optical smoke detector
- CSD-212** Combined optical smoke & fixed heat detector
- FHD-212** Fixed temperature heat detector
- RHD-212** Rate of rise heat detector

| MODEL                 | PSD-212            | CSD-212               | FHD-212            | RHD-212            |
|-----------------------|--------------------|-----------------------|--------------------|--------------------|
| DESCRIPTION           | Optical smoke      | Combined smoke/heat   | Fixed temp heat    | Rate of rise heat  |
| TYPE                  | Conventional       | Conventional          | Conventional       | Conventional       |
| APPROVAL              | EN54-7             | EN54-7, EN54-5        | EN54-5             | EN54-5             |
| CLASS                 | N/A                | A1R                   | A2S                | A1R                |
| OPERATING VOLTAGE     | 9 - 30VDC          | 9 - 30VDC             | 9 - 30VDC          | 9 - 30VDC          |
| STANDBY CURRENT @ 12V | < 50µA             | < 50µA                | < 50µA             | < 50µA             |
| ALARM CURRENT @ 12V   | 29mA               | 29mA                  | 29mA               | 29mA               |
| WIRE GAUGE            | 0.4mm - 2.0mm TWIN | 0.4mm - 2.0mm TWIN    | 0.4mm - 2.0mm TWIN | 0.4mm - 2.0mm TWIN |
| OPERATING TEMPERATURE | -10°C to 60°C      | -10°C to 60°C         | -10°C to 60°C      | -10°C to 60°C      |
| TEST FACILITY         | Simulated Smoke    | Simulated Smoke/ Heat | Heat Source        | Heat Source        |

# SOUNDER STROBES / CALL POINTS



## BA-2R - Red Banshee Sounder

- Sound Output @ 1m 89 - 110 dBA
- Current - 3-39 mA
- IP Rating - IP45



## BA-2W - White Banshee Sounder

- Sound Output @ 1m 89 - 110 dBA
- Current - 3-39 mA
- IP Rating - IP45



## MA1 Multi Alert Sounder

- Sound Output @ 1m - 103 dBA
- Current - 15 mA
- IP Rating - IP55



## BS-1R Red Bedroom Sounder

- Sound Output @ 1m - 90 dBA
- Current - 7 mA



## BS-1W - White Bedroom Sounder

- Sound Output @ 1m - 90 dBA
- Current - 7 mA



## DBS1 Detector Base Sounder

- Sound Output @ 1m - 93 dBA
- Current - 18 mA



## SCP2-R Resetttable Call Point

- Surface or flush mounting
- Complete with surface back box
- Spare keys available - SCP2RK



## IFB-1 Internal Fire Bell

- Sound Output - 95 dBA
- Current - 11 mA
- 6" diameter
- IP Rating - IP21C



## WFB-1 Weatherproof Fire Bell

- Sound Output - 95 dBA
- Current - 25 mA
- 8" diameter
- IP Rating - IP55



## FS-1 1 watt Strobe

- Flash rate - 60/minute
- Current - 42, 84, 126 mA
- IP Rating - IP65



# SOUNDER STROBES AND ACCESSORIES



## ZRL-2 - Remote LED Indicator Plate

- Flash rate - permanent
- Current - minimal
- Internal use only



## CB-1R - Banshee Sounder and Strobe

- Sound Output - 89-110 dBA
- Flash rate - 60/minute
- Current - 40 mA plus sounder
- IP Rating - IP45



## CB-2 - Multi-Alert Sounder and Strobe

- Sound Output - 97 dBA
- Flash rate - 60/minute
- Current - 45 mA
- IP Rating - IP55



## BAT7 12v 7.0ah SLA Battery

- Back up battery for MAG2P, MAG2, MAG4P and MAG4



## BAT18 12v 17ah SLA Battery

- Back up battery for MAG816



## 24V Boxed power supplies

- BPS-1  
24v 1 amp Boxed power supply
- BPS-2  
24v 2 amp Boxed power supply
- BPS-5  
24v 5 amp Boxed power supply

Nb Boxed power supplies require 2 x 12V batteries (not supplied)



## Door Holders

**DR916-24**  
24v DC Door Holder

**DR916-240**  
240v AC Door Holder



## DR916-FMB - Floor Mounting Bracket

- For use with DR916-24 and DR916-240



## DR916-KP Spare Keeper Plate

- For use with DR916-24 and DR916-240



## MAG816 Expander Cards

**MAGZC816**  
4 Zone Expander Card

**MAGSC816**  
4 Zone Sounder Expander Card



High resolution 700TVL CCTV cameras



INTERVIEW 5

Single way video door entry systems



BDeye combined CCTV video door access system



INTERVIEW MX  
INTERVIEW VX

Multiway video door entry systems



DIGIVIEW



CCTV protection for home or business



EVOKE

Audio only door entry systems



INTEGRA

CCTV monitors with integral DVR



GuardCam®

Combined security camera floodlight systems



fireline

Fire detection and warning systems



NightHawk<sup>LED</sup>

Low energy LED security lighting



EZ-TAG 2  
EZ-LOCK

Proximity and Keypad access control systems



AlertCam

Combined external PIR camera with RF trigger



PowerCat

4, 8 and 16 Channel Power Video Hubs



NightHawk<sup>LED</sup>

NHF Low Energy LED Flood Lights



Elite Security Products

Unit 7, Target Park, Shawbank Rd  
Lakeside, Redditch B98 8YN

ESPCAT 04/13



Follow us on [twitter](#) #TweetESP

Telephone: 01527 51 51 50

Fax: 01527 51 51 43

email: [info@espuk.com](mailto:info@espuk.com)

E&OE - Errors and omissions excepted

[www.espuk.com](http://www.espuk.com)