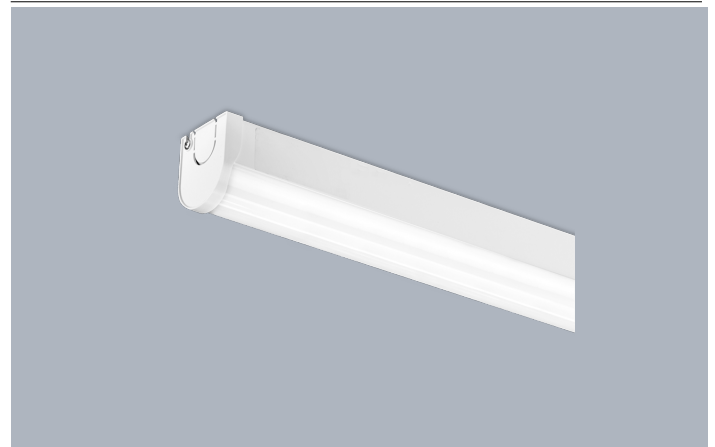


Product Description:

Introducing the newest addition to Enlite's range of LED battens, BatPac™ PRO. This product provides over 40% energy savings compared to traditional fluorescent, however provides the direct replacements for single or twin fittings in size and output. Can also be surface mounted or suspended.

Product Image:

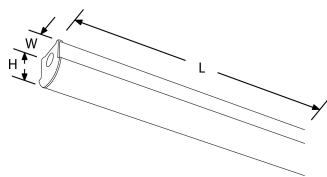


BatPac™ PRO 1500mm 63W LED Batten

Product Features:

- Opal polycarbonate diffuser
- Delivering 118lm/W
- Knockouts for cable entry on both ends
- IK08 rated impact resistance
- Push-fit terminals and clip-in gear tray for fast installation
- Multiple BESA mounting points (matches traditional fluorescent)
- Adjustable light detector from 2-50 lux for microwave option
- Adjustable hold time 5 seconds to 30 minutes for microwave option
- 5 year warranty

Line Drawing Image



Product Specs:

| | | | |
|-------------------------------|-------------|-------------------------------|---------|
| Technology | LED | Number of LEDs | 216 |
| Luminaire Distribution | Direct | Lifetime L70 (hrs) | 50000 |
| Input Voltage | 220~240V AC | Input Frequency | 50/60HZ |
| Dimmable | No | IP Rating | IP20 |
| IK Rating | IK08 | Operating Env. Temp. (Min) °C | -20 |
| Operating Env. Temp. (Max) °C | 45 | Power Factor | 0.9 |
| Lamp Base | Other | Height (mm) | 71 |
| Length (mm) | 1470 | Width (mm) | 61 |
| Surge Protection (kV) | 1.5 | SDCM | 6 |

SKU Table and Ordering

| SKU Code | Wattage | Lumens | Lumens/Watt | Colour | Beam Angle | Ra | SDCM |
|----------------|---------|--------|-------------|--------|------------|----|------|
| EN-BA1563/40 | 63 | 7500 | 119.05 | 4000 | 120 | 80 | 6 |
| EN-BA1563EM/40 | 63 | 7500 | 119.05 | 4000 | 120 | 80 | 6 |
| EN-BA1563MS/40 | 63 | 7500 | 119.05 | 4000 | 120 | 80 | 6 |

Compliance & Approvals:



Warranty

This product has a warranty period of 5 Years. Warranties are valid from the date of purchase. The warranty is invalid in the case of improper use, installation, tampering, removal of the Q.C. date label or installation in an improper working environment or installation. Should this product fail during the warranty period it will be replaced free of charge, subject to the correct installation of the original product and subsequent return of the faulty unit. Aurora does not accept responsibility for any installation costs associated with the replacement of this product and Aurora reserves the right to alter specifications without prior notice.

UK Enlite Sales & Distribution
Apex Park
6 Little Burrow
Welwyn Garden City AL7 4SW
United Kingdom
Tel : +44 (0) 1707 35 18 20