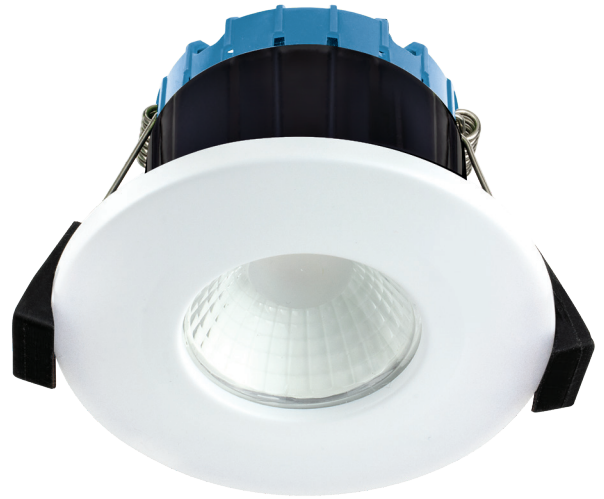


SMART FTYPE FLAT COLOUR CHANGE & RGB FIRE RATED DOWNLIGHT

SUPPLIED WITH MAGNETIC MATT WHITE BEZEL

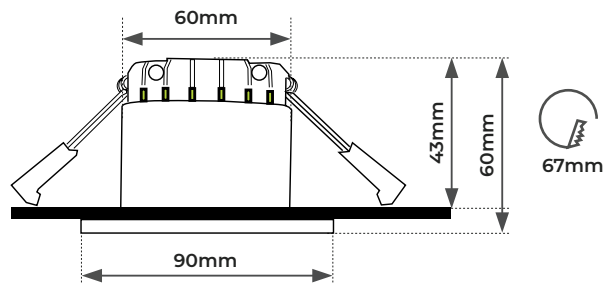
Product Features

- Intelligent Smart Meshing
- Reliable, does not overload WiFi network
- Operate using your home WiFi network on 2.4GHz - no Hub required
- Self-healing for improved reliability
- Group and control Luceco Smart lighting together or individually via voice command or the app
- Communicates* beyond WiFi router perimeter
*must have other lighting devices in range connected to WiFi



6W LED	IP65 Rating	25K Hours	67° Beam Cutout
2700-6500K WARM-COOL WHITE	RGB COLOUR	I-JOIST COMPLIANT	30, 60, 90 MINS Fire Rated
Air Leakage Part C	Acoustic Part E	5 YEAR WARRANTY	

Product Drawing

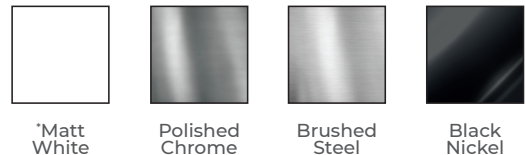


CAT NO.	LUMINAIRE LUMENS	WATTAGE	COLOUR TEMP
EFCF60WSMT	550lm	6W	2700-6500K & RGB

Product Accessories

CAT NO.	BEZEL COLOUR	BEZEL DESIGN
EFCBBZPC	Polished Chrome	Regressed
EFCBBZBS	Brushed Steel	Regressed
EFCBBZBN	Black Nickel	Regressed

Bezels




CAT NO.	WEIGHT (g)	EFFICACY (Llm/W)	CRI	BEAM ANGLE	FREQUENCY (V/Hz)	POWER FACTOR	AMBIENT TEMP RATED LIFE (°C)	L/B RATED LIFE
EFCF60WSMT	235	91.67Llm/W	>83	60°	220-240/50-60	>0.9	25°	L70/B50

*Supplied with Matt White magnetic bezel



STANDARD	DESCRIPTION
BS EN 60598-1	Luminaires. General requirements and tests
BS EN 60598-2-2	Luminaires. Particular requirements. Recessed luminaires
BS EN 62471	Photobiological safety of lamps and lamp systems
BS EN 55015	Limits and methods of measurement of radio disturbance characteristics of electrical lighting and similar equipment.
BS EN 61547	Equipment for general lighting purposes. EMC immunity requirements.
BS EN 61000-3-2	Electromagnetic compatibility (EMC). Limits. Limits for harmonic current emissions (equipment input current ≤ 16 A per phase)
BS EN 61000-3-3	Electromagnetic compatibility (EMC). Limits. Limitation of voltage changes, voltage fluctuations and flicker in public low-voltage supply systems, for equipment with rated current ≤ 16 A per phase and not subject to conditional connection
ETSI EN 300 328 V2.2.1	Wideband transmission systems; Data transmission equipment operating in the 2,4 GHz band; Harmonised Standard for access to radio spectrum
ETSI EN 301 489-1 V2.2.3	ElectroMagnetic Compatibility (EMC) standard for radio equipment and services; Part 1: Common technical requirements; Harmonised Standard for ElectroMagnetic Compatibility
ETSI EN 301 489-17 V3.2.4	ElectroMagnetic Compatibility (EMC) standard for radio equipment and services; Part 17: Specific conditions for Broadband Data Transmission Systems; Harmonised Standard for ElectroMagnetic Compatibility
BS EN IEC 62311	Assessment of electronic and electrical equipment related to human exposure restrictions for electromagnetic fields (0 Hz to 300 GHz)
2014/35/EU	LVD - Low Voltage Directive
2014/30/EU	EMC - Electromagnetic Compatibility
2011/65/EU	RoHS - Restriction Of The Use Of Certain Hazardous Substances in electrical and electronic equipment
1907/2006/EU	REACH - Registration, Evaluation, Authorisation and Restriction of Chemicals
2014/53/EU	RED - Radio Equipment And Repealing Directive
2019/2020/EU	ERP - Ecodesign Requirements For Energy-Related Products



Luceco
EFCF60WSMT-01

A

B


C

D

E


F

G



F

6
kWh/1000h



2019/2015

