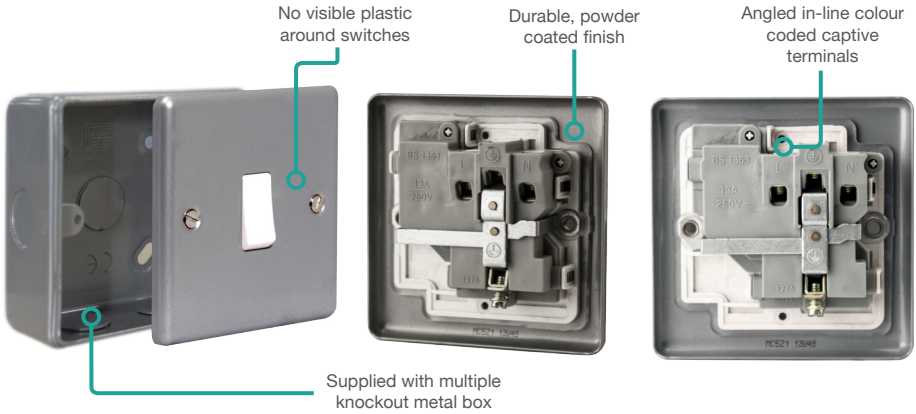




metal clad wiring accessories

A rugged scratch resistant metal, suitable for everyday use
in commercial and industrial environments

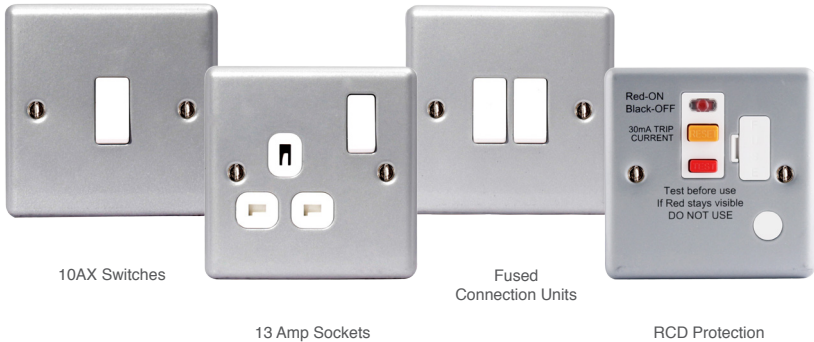
2 Features & Finishes



Switches & Sockets	3
RCD Protection	3
Round Pin Outlets	4
45 Amp Switches	4
20 Amp Switches	4
FCUs	5
Blank & Euro Module	5
Telephone & Data	5
Key Controlled Socket	6
Surface Boxes	6



Range Content



Metal Clad Heavy Duty Wiring Accessories

Cat No.	Description	Inner Carton	Outer Carton
10 Amp 10AX Switches			
MC512	1 gang 2 way	10	50
MC513	Intermediate	10	50
MC514	1 gang bell push	10	50
MC542	2 gang 2 way	10	50
MC543	3 gang 2 way	10	50
MC544	4 gang 2 way	5	25

- Manufactured to BS EN 60669-1
- Terminal capacity 4 x 1.0mm², 4 x 1.5mm² 2 x 2.5mm² & 1 x 4.0mm²
- Mounting box with 1 x 20mm knockouts in each side and rear face



13 Amp Socket Outlets			
MC521	1 gang switched	10	50
MC522	2 gang switched	5	25
MC523	1 gang unswitched	10	50
MC524	2 gang unswitched	5	25

- Manufactured to BS 1363 part 2
- Terminal capacity 3 x 2.5mm², 3 x 4.0mm² & 2 x 6.0mm²
- 1g mounting box with 1 x 20mm knockouts in each side and rear face



13 Amp RCD Protection			
MC522RCD	2 gang switched socket outlet	5	25
MC554RCD	Fused connection unit	10	50

- Maximum load 3120 watts 240V AC
- Manufactured to BS 7288:1990
- Terminal capacity 3 x 2.5mm², 3 x 4.0mm² & 2 x 6.0mm²
- Earth terminal in mounting box
- 30 mA trip speed 40 ms
- Mounting box with 1 x 20mm knockouts in each side and rear face
- Latching type



There are 2 types of RCD - **Latching** and **Non-Latching**; also termed active and passive. Both types are accepted by British Standards and it is up to the user to choose the type of RCD most suitable for their application.

NON-LATCHING (active) RCDs switch off when the power to them is turned off. Every time the supply to the RCD is interrupted it will trip and will need to be reset.

LATCHING (passive) RCDs "remember" the state they were in prior to the power being switched off.

Metal Clad Heavy Duty Wiring Accessories

Cat No.	Description	Inner Carton	Outer Carton
Round Pin Socket Outlets			
MC528	1 gang 2 amp unswitched	10	50
MC529	1 gang 5 amp unswitched	10	50
MC599	1 gang 15 amp switched	10	50

- Manufactured to BS 546
- Supplied with surface mounting box
- Mounting box with 1 x 20mm knockouts in each side and rear face



45 Amp Double Pole Switches			
MC570	Cooker control unit and socket with power indicator	5	25
MC571	Cooker control unit and socket	5	25
MC572	Double plate with power indicator	5	25
MC574	Single plate with power indicator	10	50

- Double pole switches to BS EN 60669-1
- 1 gang mounting box with 1 x 20mm knockouts in each side and rear face
- Cooker control units manufactured to BS4177
- L & N terminal capacity 4 x 4.0mm², 3 x 6.0mm² & 1 x 16.0mm²



20 Amp Switches			
MC531	Double pole switch with power indicator and optional flex outlet	10	50
MC558	Flex outlet plate	10	50



- Manufactured to BS EN 60669-1
- Mounting box with 1 x 20mm knockouts in each side and rear face
- Terminal capacity 3 x 2.5mm², 3 x 4.0mm² & 2 x 6.0mm² (MC558)
- Terminal capacity 3 x 2.5mm² & 1 x 4.0mm² (MC531)

Metal Clad Heavy Duty Wiring Accessories

Cat No.	Description	Inner Carton	Outer Carton
13 Amp Fused Connection Units			
MC550F	with optional flex outlet	10	50
MC551F	with power indicator and optional flex outlet	10	50
MC552F	with optional flex outlet	10	50

- Manufactured to BS 1363 part 4
- Mounting box with 1 x 20mm knockouts in each side and rear face
- Terminal capacity 3 x 2.5mm², 2 x 4.0mm² & 1 x 6.0mm²
- Removable flex outlet bung



Blank and Euro Module Plates			
MC504	1 gang blank plate	10	50
MC505	2 gang blank plate	5	25
MC5EMS1	Euro Module 1 module - square	20	200
MC5EMS2	Euro Module 2 module - square	10	100
MC5EMR4	Euro Module 4 module - rectangular	10	100

- Not supplied with surface mounting box
- Manufactured to BS 5733



Cat No.	Description	Terminal Type	Inner Carton	Outer Carton
MC5BTM1	Telephone master, 1 gang	Screw	EM	-
MC5BTM2	Telephone master, 2 gang	Screw	EM	-
MC5BTS1	Telephone slave, 1 gang	Screw	EM	-
MC5BTS2	Telephone slave, 2 gang	Screw	EM	-
MC5RJ111	RJ11 socket, 1 gang	Screw	EM	-
MC5RJ112	RJ11 socket, 2 gang	Screw	EM	-
MC5RJ451	RJ45 data outlet socket, 1 gang	IDC	EM	-
MC5RJ452	RJ45 data outlet socket, 2 gang	IDC	EM	-

- Telephone and data products are supplied in Euro Module format as a kit of components - separate front plate, module and mounting box
- Mounting box with 1 x 20mm knockouts in each side and rear face



Metal Clad Heavy Duty Wiring Accessories

Cat No.	Description	Inner Carton	Outer Carton
13 Amp Double Pole Key Controlled Socket Outlet			
MC5SKYSWSW*	13 amp, double pole key controlled socket outlet	EM	-



- Lockable socket, supplied with two keys
- DP switch
- + Supplied as kit of Euro Module components

13 Amp Switched Socket with USB Charger			
MC522U	2 gang + 2 USB (2.1A)	5	50



- Ideal for charging iPad, iPhone, tablets, mobiles, cameras and more
- 2 x Type A USB sockets - 2.1A total output, 5V
- Twin earth fitted as standard
- Terminal capacity 3 x 2.5mm², 3 x 4.0mm² & 2 x 6.0mm²
- 10 year guarantee

Surface Mounting Boxes			
MC501	1 gang	5	25
MC502	2 gang	10	50

- Rugged design to withstand everyday use in commercial environments
- Manufactured in heavy gauge steel for extra safety
- Finished with epoxy powder coating for added scratch resistance



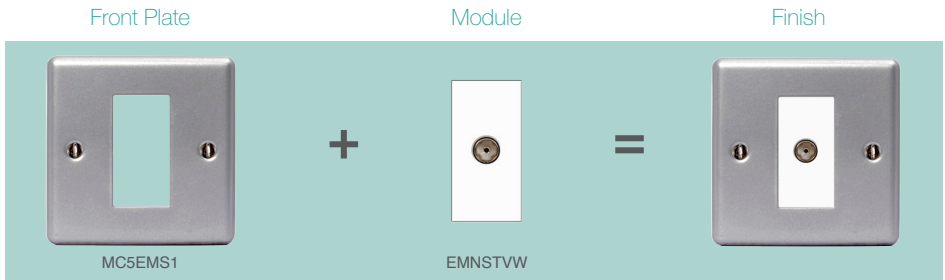
Note: - mounting boxes available without knockouts for projects (subject to conditions)

Please contact your Specification Manager for more details.
Visit www.bgelectrical.uk/contact or call (01952) 238 100

Euro Module - Range Extension

A flexible solution of power, data, telephone, television and audio combinations to suit the wide ranging needs of the customer.

- Select the desired combination of front plate and module(s)
- Simple installation, wire the module through the front plate aperture then click the module into place
- Modules of mains and extra low voltage rating must not be fitted to the same front plate aperture Ref. BS 7671:2008

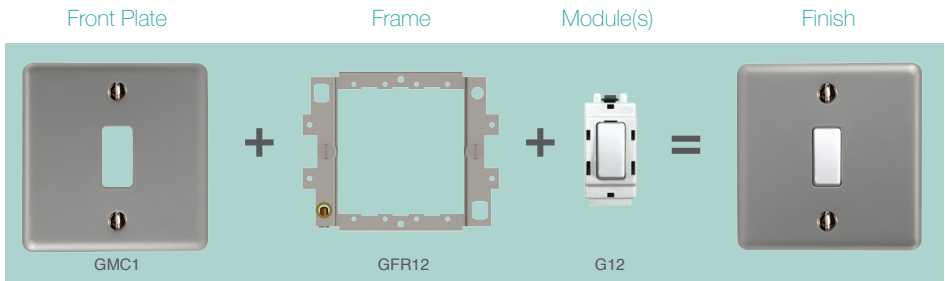


For full information see our Euro Module range

Grid - Range Extension

A customisable selection of power grid modules that provide a seamless appearance with the associated wiring accessories.

- Firstly, screw the grid frame to the mounting box and wire the modules
- Then slot the module on to the frame and click into place
- Finally, fit the finished plate



For full information see our Nexus Grid

Head Office

Email: info@luceco.com

Luceco Ltd
Caparo House,
103 Baker Street, London,
United Kingdom, W1U 6LN

UK:

Tel: +44 (0) 1952 238 100
Fax: +44 (0) 1952 238 180
Email: sales@luceco.com

Nexus Industries Ltd
Nexus Distribution Centre
Stafford Park 1, Telford,
Shropshire, England, TF3 3BD

Germany:

Tel: +49 40 89066 8780
Fax: +49 40 89066 87829
Email: eu_sales@nexusinds.com

Nexus Industries GmbH
Holstenplatz 20b
22765 Hamburg, Germany

France:

Tel: +33 (0)7 88 29 56 59
Fax: +33 (0)1 5731 74 19
Email: fr_sales@nexusinds.com

Nexus Industries SAS
France & Belux
3 Rue de Courtaïn
Magny Le Hongre 77700
FRANCE & BELUX

Italy:

Tel: +39 0434 1696795
Fax: +39 0434 1696795
Email: it_sales@nexusinds.com

Nexus Italia, Via Amman 10
33170 Pordenone, Italy

Spain:

Tel: +34 93 829 55 75
Email: sp_sales@nexusinds.com

Nexus Industries LTD
C/ Bobinadora 1-5
08302 Mataró
Barcelona (SPAIN)

Middle East:

Tel: +971 4 609 1867
Fax: +971 4 609 1868
Email: mea_sales@
nexusinds.com

Luceco Middle East FZE
Bldg. 5EB, Office 342,
PO Box 371128, DAFZA,
Dubai, UAE.

Asia Pacific:

Tel: +86 (0) 573 8357 0200
Fax: +86 (0) 573 8357 0248
Email: asia_sales@nexusinds.cn

No 1438, Jiachuang Road,
Xiuzhou Industrial Park, Jiaxing,
Zhejiang, China, P.C. 314031

North & South America:

Tel: +1 281 978 2509
Fax: +1 281 466 4620
Email: us_sales@luceco.com

Luceco Inc
11050 West Little York Road
Building C-2, Houston, Texas,
USA 77041

Africa:

Tel: +27 11 432 6779
Fax: +27 86 219 2099
Email: africa_sales@nexusinds.com

Unit 2, Cedar Wood Office Park
Cnr. Western Service and
Mount Lebanon Road Woodmead
South Africa, 2144

LUCECO

a Luceco Ltd. Group company



LUCECO

www.bgelectrical.uk