

## ⚠ Important Safety Notice ⚠

It is the responsibility of the person installing the electrical equipment to ensure that the installation meets the requirements of the IET wiring regulations and is therefore 'fit for purpose'. Factors such as correct selection of components, cable sizing, protective devices and Earth bonding are all critical and should be checked prior to full testing and power-up. Any other regulations applicable to the equipment being installed such as the Machinery Directive and current health and safety legislation must also be adhered to.

Terminals, including factory fitted, should be checked periodically to ensure correct tightness.



### Auxiliary / Switch Look up Table



Load Break Enclosure / Switch Size	Potential Number of Additional Auxiliaries
3P Boxed 32-80A	1 Auxiliary
4P Boxed 20-40A	-
4P Boxed 63-80A	1 Auxiliary
4P Boxed 100-125A	-
4P Large Enclosure 25-40A	1 Auxiliary
3P Metal Clad 25-80A	1 Auxiliary
4P Metal Clad 25-125A	1 Auxiliary
4P Diecast 25-63A	1 Auxiliary
4P Stainless Steel 25-40A	-
4P Stainless Steel 63-80A	1 Auxiliary
6P Boxed 25-40A	2 Auxiliaries (1 either side)
6P Boxed 63-125A	2 Auxiliaries (1 either side)
8P Boxed 25-40A	-
8P Boxed 63-125A	-
4P Boxed Change Over 25-40A	-
4P Metal Clad Change Over 32-63A	-
4P Metal Enc Change Over 63-125A	-



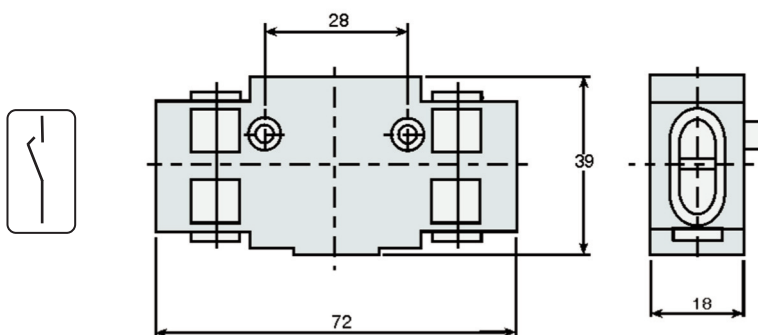
### Neutral Contact / Early make late break contact

Can be fitted either side of the switch.

For switch ratings and recommended torque for terminals please see the corresponding switch data sheet.

### LB263AUXEMFM, LB263AUXEM 25-63A

Recommended tightening torque for fixing screws 0.3Nm



### LB2125AUXEM / LB2125AUXEM 80 - 125A

