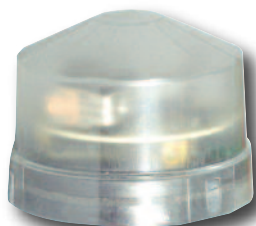


GreenBrooks range of Photocells offer a wide selection of products for dusk to dawn switching. A Photocell detects the level of light and will turn lights on when it gets dark.



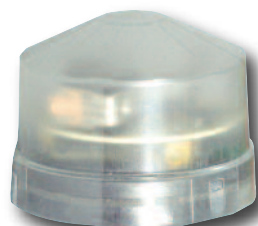
PEC1000



PECH



PEC500



PECH500

Note: LED compatible can run loads up to 400 watts, the total number of light fittings should be limited to no more than **10** fittings.

	PEC1000	PECH	PEC500	PECH500
Product Finish	Black	Black	Black	Black
Description	Electronic Photocell Kit with detachable sensing module	Replacement head for PEC1000	Electronic Photocell Kit with detachable sensing module	Replacement head for PEC500
Product Dimensions	81mm dia x 130mm H	81mm dia x 62mm H	81mm dia x 80mm H	81mm dia x 62mm H
Product weight	172 gms	91 gms	172 gms	91 gms
Barcode	5012739622885	5012739622977	5012739627231	5012739627248
Voltage	230V ~ 50Hz	230V ~ 50Hz	230V ~ 50Hz	230V ~ 50Hz
Switching delay	10-15 seconds	10-15 seconds	10-15 seconds	10-15 seconds
IP Rating	IP65	-	IP65	-
Ambient Light	ON < 20 - OFF > 80 LUX	-	ON < 20 - OFF > 80 LUX	-
Max Switching capacity	10A	10A	5A	5A
Rated Load	Max load 2000W tungsten / 2 x 400W HPS / 400W LED	Max load 2000W tungsten / 2 x 400W HPS / 400W LED	Max load 1000W tungsten / 2 x 240W HPS / 400W LED	Max load 1000W tungsten / 2 x 240W HPS / 400W LED
Guarantee	1 Year	1 Year	1 Year	1 Year
Certification & Conformity	EN 60947-1 EN 61000-3 EN 61000-6	EN 60947-1 EN 61000-3 EN 61000-6	EN 60947-1 EN 61000-3 EN 61000-6	EN 60947-1 EN 61000-3 EN 61000-6

ORION RANGE

Photocells

GreenBrooks range of Photocells offer a wide selection of products for dusk to dawn switching. A Photocell detects the level of light and will turn lights on when it gets dark.



PEC20



PECR

Note: LED compatible can run loads up to 400 watts, the total number of light fittings should be limited to no more than **10** fittings.

	PEC20	PECR
Product Finish	Black	White
Description	2000W/10A Remote/Panel Mounting Photocell 16mm mounting thread size with lockrings	1000W/4.5A Remote Photocell 20mm mounting thread size with lock rings
Product Dimensions	52 x 29 x 21mm	45 x 45 x 30mm
Product weight	44 gms	68 gms
Barcode	5012739622892	5012739634482
Voltage	230V ~ 50Hz	230V ~ 50Hz
IP Rating	IP65 (when fitted)	IP65 (when fitted)
Ambient Light	ON < 20 - OFF > 80 LUX	70 LUX automatic switch on
Max Switching capacity	10A	4.5A
Rated Load	Max load 2000W tungsten / 2 x 400W HPS 400W LED	Max load 1000W tungsten, Electrical life 5000 cycles 400W LED
Guarantee	1 Year	1 Year
Certification & Conformity	EN 60947-1	EN 60947-1