

# 100mm (4") Fan Range

XF100/XP100/WF100



- Designed for wall, ceiling or window mounting, this comprehensive range offers a wide selection of models for use in bathrooms and toilets.
- Quiet and efficient, the 100mm (4") series has an impressive extract rate of 85m<sup>3</sup>/hr, 23 litres per second, and is available in the ten options detailed opposite.
- The units are all manufactured using high ABS thermoplastics for strength and durability, aesthetics and easy cleaning.
- Power is provided by a single phase induction motor with pre-oiled bearings for a long, maintenance-free life.
- Designed to comply with the 2006 Building Regulations on Ventilation (F1).

## Technical Details

Cat. No. Product type  
100mm (4") Wall/Ceiling Fans

- XF100S** Standard model for remote switching
- XF100P** As above supplied with pullcord switch
- XF100T** Timer model incorporating integral adjustable electronic timer (1-20 mins)
- XF100TP** As above but with pullcord override switch. Requires no switched live
- XF100MH** Electro-Mechanical Humidity Control with on/off Switch adjustable 20-90% RH
- XF100MHP** As above but with pullcord switch and neon light
- XF100MHT** As XF100MH but with Electronic Timer
- XF100H** Humidity control which is adjustable between 40% RH and 95% RH Complete with integral adjustable timer (1-20 mins)
- XF100HP** As above but with pullcord override switch. Requires no switched live
- XF100PIR** PIR activated model which switches on as a person enters the room and runs on after the room is vacated. There is no need to connect to a separate switch Timer adjustable between 1-20 mins. Requires no switched live

### 100mm (4") EXTRACTOR PAKS with aluminium flexible ducting and wall grille

- XP100S** Standard model for remote switching
- XP100P** As above supplied with pullcord switch
- XP100T** Timer model incorporating integral adjustable electronic timer (1-20 mins)
- XP100TP** As above but with pullcord override switch. Requires no switched live
- XP100H** Humidity control which is adjustable between 40% RH and 95% RH Complete with integral adjustable timer (1-20 mins)
- XP100HP** As above but with pullcord override switch. Require no switched live
- XP100PIR** PIR activated model which switches on as a person enters the room and runs on after the room is vacated. There is no need to connect to a separate switch Timer adjustable between 1-20 mins. Requires no switched live

### 100mm (4") WINDOW FANS

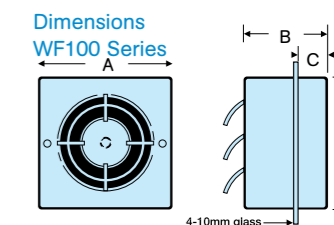
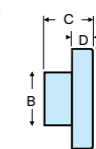
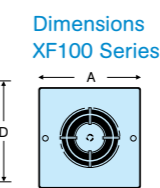
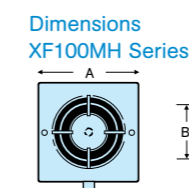
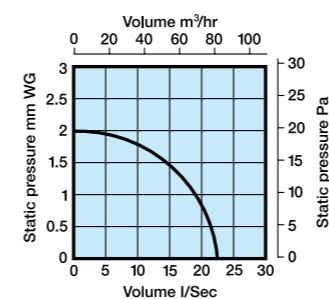
- WF100P** Pullcord model
- WF100T** Timer model incorporating integral adjustable timer (adjustable 1-20 mins) Complete with pullcord switch
- WF100H** Humidity control which is adjustable between 40% RH and 95% Complete with integral adjustable timer (1-20 mins)
- WF100PIR** PIR activated model which switches on as a person enters the room and runs on after the room is vacated. There is no need to connect to a separate switch Timer adjustable between 1-20 mins. Requires no switched live

### Dimensions (mm)

| PRODUCT        | A   | B   | C   | D   | E   | F  | G  | H   | I    | J   | K    |
|----------------|-----|-----|-----|-----|-----|----|----|-----|------|-----|------|
| <b>XF100</b>   | 163 | 98Ø | 75  | 30  | 163 |    |    |     |      |     |      |
| <b>XF100MH</b> | 163 | 98Ø | 67  | 163 |     |    |    |     |      |     |      |
| <b>XP100</b>   | 140 | 33  | 98Ø | 15  | 98Ø | 75 | 30 | 163 | 110Ø | 380 | 102Ø |
| <b>WF100</b>   | 163 | 90  | 30  | 163 |     |    |    |     |      |     |      |

### Performance Graph

XF/XP/WF100 Series 85m<sup>3</sup>/hr, 23 l/s



### Packaging

XF100 Series in outers of 10 measuring 370mm x 200mm x 560mm - weight 7kgs

XF100MH Series in outers of 10 measuring 572mm x 232mm x 413mm - weight 9kgs

XP100 Series in outers of 10 measuring 380mm x 210mm x 765mm - weight 9kgs

WF100 Series in outers of 10 measuring 360mm x 210mm x 570mm - weight 9kgs

### Installation

XF100 Series designed for wall mounting (pullcord version wall mounting only) through 100mm (4") diameter flexible or rigid pipes or Manrose low profile, flat channel ducting systems.

XP100 Series designed for through wall fixing, supplied with aluminium flexible ducting and external wall grille. Cut out for XP100 kits (112mm/4 1/2").

WF100 Series designed for window mounting through a standard 115 - 155mm Ø hole.

### Electrical

220-240V - AC. 50Hz □. Single phase consuming 14 watts. These fans are double insulated and do not require an earth. All wiring must comply with current IEE regulations. A double pole isolating switch, having a contact separation of at least 3mm in all poles, must be used with a 3 amp fuse fitted. The fan must not be accessible to a person using either the shower or bath and mounted a minimum of 1.8 metres from the floor.

### Additional Data

**100mm (4") Range**  
Maximum pressure: 20 p.a.  
Fan speed: 2400 r.p.m.  
Sound volume: 41.0 dB(A)  
Maximum operating temperature: 40°C.

