



20A Flex Outlet Module



GRIDPRO[®] offers a comprehensive range of modules in multiple finishes to offer ultimate flexibility. The GRIDPRO[®] range will complement your existing Click installation, as the range was specifically designed to seamlessly match our existing ranges of Click[®] accessories.

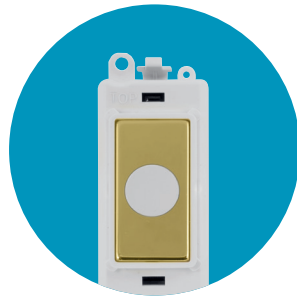
20A Flex Outlet Module

Product Range

Finish Comparison



Antique Brass (AB)



Polished Brass (BR)



Black (BK)



Polished Chrome (CH)



Satin Chrome (SC)



Satin Brass (SB)



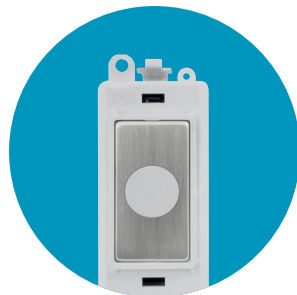
Polar White (PW)



Black Nickel (BN)



Pearl Nickel (PN)



Stainless Steel (SS)



Brushed Steel (BS)

20A Flex Outlet Module

Product Range

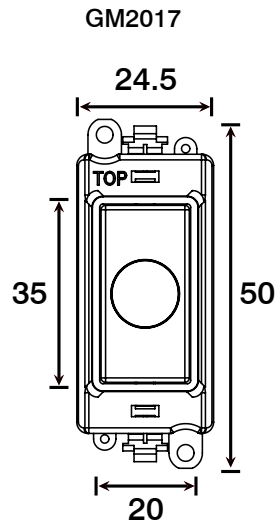
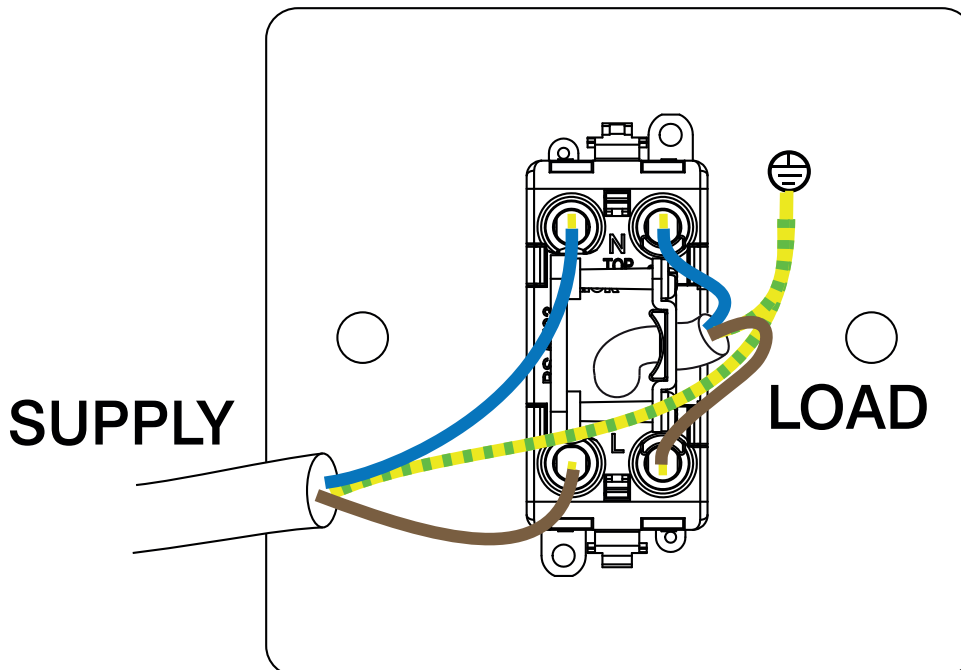
20A Flex Outlet Module

GM2017##**

20A Flex Outlet Module



GM2017BKCH

20A Flex Outlet Module**Product Dimensional Drawings (mm)****Wiring Diagram**

20A Flex Outlet Module

Technical Specification

20A Flex Outlet Module

Material Composition	Module Front: Nylon or Nylon + Stainless Steel Cover (Ingot) Cover, Insert & Rear Housing: Nylon Terminals: Brass Terminal Screws: Steel & Yellow Passivated
Voltage	250V~ 50Hz
Current Rating	20A
Terminal Size	5mm \varnothing
Torque Value	1.2Nm
Cable Size	2 x 4mm ² , 3 x 2.5mm ² or 1 x 6mm ²
Back Box Depth	25mm - 47mm (Deco, Deco+, Mode, Polar) 35mm - 47mm (Define, Definity)
Modular	Yes
Warranty	10 Years
IP Rating	IP20
Operational Temperature	-5° to +40°C
Standards	The Low Voltage Directive 2014/35/EU BS 5733: 2010

Additional Information

Ensure that the mains supply is isolated before commencing installation and refer to the circuit diagram supplied with the relevant product.

These products are rated at 20A; therefore all terminals should not exceed the stated amperage.

Bare earth cables must always be covered with appropriate sleeving and wired to the earth terminal.



EU DECLARATION OF CONFORMITY

1. *Issuer Name* Scolmore International Limited
2. *Issuer Address* 1 Scolmore Park, Landsberg,
Lichfield Road Industrial Estate,
Tamworth, Staffordshire, B79 7XB
3. *Object(s) of Declaration* GRID PRO Range
a. *Group* 20A Flex Outlet Module
b. *Model No.* GM2017
4. *The object of the declaration described above is in conformity with the requirements of the following Legislations:*
- | Document No | Title |
|-------------|-----------------------|
| 2014/35/EU | Low Voltage Directive |

5. *All products contained within the aforementioned comply with the relevant standards and requirements listed below.*

BS 5733: 2010

6. *I hereby declare that the equipment named above has been designed to comply with the relevant sections of the above referenced specifications. The unit complies with all applicable Essential Requirements of the Directives.*

In conjunction with the above all manufacture and process controls are in accordance with ISO 9001:2008.

This declaration has been issued under the sole responsibility of the manufacturer, signed at, for and on behalf of: Scolmore International Limited

Ross Turner - Technical Support Engineer